



**Ministry of Education, R.O.C.**

Address: No.5, ZhongShan South Road, Taipei, Taiwan 10051, R.O.C.  
Website: [www.edu.tw](http://www.edu.tw)



**Foundation for International Cooperation in Higher Education of Taiwan (FICHET)**

Address: Room 202, No.5, Lane 199, Kinghua Street, Taipei City, Taiwan 10650, R.O.C.  
Website: [www.fichet.org.tw](http://www.fichet.org.tw)  
Tel: +886-2-23222280 Fax: +886-2-23222528



Study in Taiwan APP  
Scan now to download!

2016 01 01



miào

wǔ shù

xiě zì

xué

wū lóng chá

fēng sú

lǚ yóu



[www.studyintaiwan.org](http://www.studyintaiwan.org)

zòng zi

## Table of Contents

02 Why Taiwan

06 Scholarships

08 Test of Chinese as a Foreign Language (TOCFL)

11 Chinese Learning Centers in Taiwan

12 Chinese Learning Centers in Taiwan—North

34 Chinese Learning Centers in Taiwan—Central

43 Chinese Learning Centers in Taiwan—South

56 Chinese Learning Centers in Taiwan—East

# Learning Chinese in Taiwan

---

Why Taiwan

Scholarships

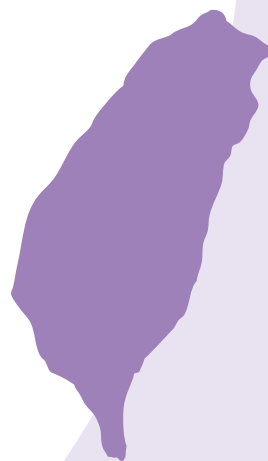
Test of Chinese as a Foreign Language (TOCFL)



# Why Taiwan

## 10 Reasons for Learning Chinese in Taiwan

- 1 Learn Traditional Chinese Characters
- 2 45 Government-approved Centers for Teaching Chinese
- 3 A Perfect Place to Learn Chinese
- 4 A Repository of Chinese Culture
- 5 Available Scholarships
- 6 A Free Democratic Society
- 7 Easy to Reach, A Great Place to Travel
- 8 High Standard of Living
- 9 Test of Chinese as Foreign Language (TOCFL)
- 10 Work While You Study



We welcome you to  
our friendly island paradise!

Taiwan is an ideal place for international students who want to learn Mandarin Chinese, also called Mandarin, Huayu, Guoyu, Hanyu, Putonghua, and Zhongwen in Chinese-speaking communities around the world, and Modern Standard Chinese. Taiwan is also an ideal place to learn to read and write Chinese characters, something that will enable you to communicate, in writing, with people who speak other Chinese dialects. The traditional character forms are still used in Taiwan. Learning these is essential for any student who plans to become a translator and they allow you to more fully appreciate the Chinese language, across the centuries.

There are 45 Chinese Language Centers located at colleges and universities throughout Taiwan, offering classes year-round. The instruction and teaching materials are top-notch and designed to help students achieve their language goals. Outside of class, students will have innumerable opportunities to practice reading Chinese characters and speaking Mandarin with the friendly citizens of Taiwan.

See P.11 ~ P.56 for the locations and websites of Chinese Language Centers







## GEOGRAPHY

### Location

Pacific Ocean, 120 km (74.6 miles) off the coast of mainland China

### Territory Size

36,193 km<sup>2</sup> (13,973.3 sq miles)

### Highest Point

Yu Shan (3,952 m=12,965.9 ft)

### Capital City

Taipei

## DEMOGRAPHICS

### Population

Approximately 23,000,000

### Density

647 people per sq km

### Ethnic Groups

Taiwan's population is predominantly:

■ Han Chinese comprising around 97%:

1. 70% Holo (or 'Hoklo') people, who historically originated in Fujian province
2. 18% Hakka people, and
3. 9% (8.72%) who arrived in 1949

■ Indigenous Peoples make up about 2% (2.28%)

■ New immigrants, including non-ROC spouses from mainland China, and Southeast Asia, and others make up about 1%.

For more details see:

[www.ey.gov.tw/en/cp.aspx?n=5776024635D354A6](http://www.ey.gov.tw/en/cp.aspx?n=5776024635D354A6)

### Official Language

Mandarin

## OTHER

### Currency

New Taiwan Dollar (NTD)

### Electricity

Electrical current is 110 volts, 60 cycles, AC

### Drive On

Traffic drives on the right

### Calling Code

+886

### Time Zone

UTC+8

# Taiwan, Republic of China

Check  
out!

## Useful Links

- 1 **Huayu World – Chinese Learning Portal**  
[www.huayuworld.org](http://www.huayuworld.org)
- 2 **Information for Foreigners in Taiwan**  
[iff.immigration.gov.tw/iffwelcome.asp](http://iff.immigration.gov.tw/iffwelcome.asp)
- 3 **Ministry of Education, Republic of China (MOE)**  
[english.moe.gov.tw](http://english.moe.gov.tw)
- 4 **Taiwan Academy**  
[www.taiwanacademy.tw](http://www.taiwanacademy.tw)
- 5 **Taiwan Education Centers**  
[www.fichet.org.tw/tec](http://www.fichet.org.tw/tec)
- 6 **The E-government Entry Point of Taiwan**  
[www.taiwan.gov.tw](http://www.taiwan.gov.tw)
- 7 **Welcome to Taiwan – Tourism Bureau**  
[taiwan.net.tw](http://taiwan.net.tw)





United Kingdom

National Taichung University of Education  
Chinese Language Center

If you decide to take the plunge and study Chinese in Taiwan it could possibly be the best time of your life! In just under a year, I was able to go from barely being able to pronounce the words, to be able to have conversations with the locals. The teachers are very hard-working and personalize teaching based on your needs. It's a profound experience learning a language from nothing, and the people who undertook this journey with me will now be friends for life. I have enjoyed the experience so much, that my one year out to gain a skill has turned into three years developing a career. My one piece of advice is to use the language at every opportunity. If you get the opportunity you won't regret coming to Taiwan!



David  
Boulter



Alexander  
Clevén



Germany

Fu Jen Catholic University  
Center of Chinese Language and Culture

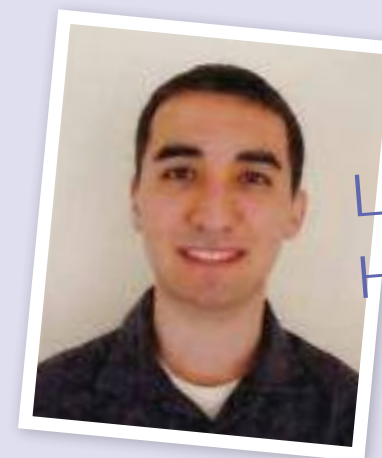
My first impression was all the way positive. Learning conditions in the Language Center were great and the class system convinced me from the very beginning. Small classes, competent teachers, and a harmonious environment made it a great Chinese learning experience. So I decided to take my obligatory Chinese foreign year in Taipei instead of going to China. In my opinion, the language center provides me the best conditions and study environment to take an intensive Chinese course for a whole year. It is not that expensive, has a high quality, and the whole language center team, from teachers to the office staff. They all help you handle every situation because they know you have to deal with a totally distinct language, culture, and all-day life.



U.S.A.

National Pingtung University  
Chinese Language Division, Language Center

My time in Taiwan was twofold. I first lived in Taipei and experienced the excitement of the big city. Then for the second half of my stay, I moved down south to Pingtung where there is less hustle and bustle, and a more laidback atmosphere. I enjoyed life both in the north and the south while learning about Taiwanese culture and improving my Chinese. One of the things I will never forget is the kindness the local people show toward each other and toward foreigners. Taiwan is definitely a foreigner-friendly place to live and learn Chinese.



Lewis  
Henke



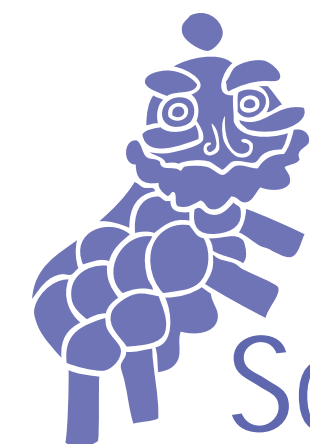
France

National Changhua University of Education  
Language Center

Learning Chinese in Taiwan is a really fruitful and rewarding experience. In Taiwan, the traditional characters are used so it pushes me to learn traditional which is very important in the learning of Chinese. The words used here are a bit different from China and some come directly from the ancient Chinese, so knowing these words help understanding the evolution of language through the ages as well. Taiwanese classmates are helpful, they want foreign exchange students to enjoy a full experience and feel well in their country, it's important for them. And this really is part of Taiwanese culture: to be very welcoming and attentive to other people's needs.



Réda  
Sahoum



# Scholarships

## Huayu (Mandarin) Enrichment Scholarship

The Ministry of Education (MOE) of Taiwan provides the Huayu Enrichment Scholarship (HES) to encourage international students and individuals to undertake Chinese language study in Taiwan.

Scholarship	Application Date	Details
<b>Huayu (Mandarin) Enrichment Scholarship</b>	<b>February 1 to March 31</b>	<ul style="list-style-type: none"> <li>Duration: summer classes (2 months), 3, 6, or 9 months, or 1 year</li> <li>Monthly stipend: NT \$25,000 (~US \$834) US \$1 is about NT \$32</li> <li>For recipients from countries designated by the MOE as eligible</li> </ul>

For more information about the Taiwan Scholarships and Huayu Enrichment Scholarship, please visit our website at [taiwanscholarship.moe.gov.tw](http://taiwanscholarship.moe.gov.tw) or contact your nearest representative office directly ([english.moe.gov.tw](http://english.moe.gov.tw) About MOE Overseas Offices)

Some Chinese learning centers offer scholarships.  
See p.12~p.56 for more information.

Let's see what international students say  
when asked "Why Taiwan?"



# Test of Chinese as a Foreign Language (TOCFL)

## Test Introduction

The Test of Chinese as a Foreign Language (TOCFL) is a standardized language proficiency test developed for non-native speakers of Chinese. It has already served test takers from over 60 countries. The current TOCFL test is divided into three proficiency bands: Band A, Band B, and Band C, and each band is subdivided into two levels, making a total of six levels: from Level 1 up to Level 6. It offers separate testing of listening, reading, speaking, and writing. Test takers can choose the test levels that best suit their Chinese language proficiency and learning background.

Test Level	Test Result	Learning Hours (in Chinese speaking country)	Learning Hours (in non-Chinese speaking country)	Vocabulary Base
Band A	Level 1 (A1)	120–240 hours	240–480 hours	500 words
	Level 2 (A2)	240–360 hours	480–720 hours	1,000 words
Band B	Level 3 (B1)	360–480 hours	720–960 hours	2,500 words
	Level 4 (B2)	480–960 hours	960–1,920 hours	5,000 words
Band C	Level 5 (C1)	960–1,920 hours	1,920–3,840 hours	8,000 words
	Level 6 (C2)	More than 1,920 hours	More than 3,840 hours	8,000 words

## Purpose of the TOCFL

TOCFL test takers who reach the level requirements will receive a certificate. A TOCFL certificate can serve as a Chinese proficiency credential for:

- applying for a Taiwan Scholarship
- applying for an academic program at a college or university in Taiwan
- evidence of Chinese subject proficiency for the University Entrance Committee for Overseas Chinese Students
- evidence of Chinese language proficiency for employment purposes

A TOCFL certificate can be used as an official document when applying for admission to undergraduate and graduate programs in Taiwan, and many international businesses have adopted TOCFL as evidence of language proficiency for their employees who are being assigned to work in or with Taiwan.

## Target Test Takers

TOCFL is designed for non-native speakers of Chinese. Those who would like to know their level of Chinese proficiency, or those who want to study, work or do business in Chinese speaking countries are welcome to take the test.



## TOCFL Testing Overseas

The Steering Committee for the Test of Proficiency-Huayu (SC-TOP) started to provide overseas test services in 2006 to meet the demands of numerous international Chinese learners. Candidates can now choose to take the TOCFL tests in Argentina, Australia, Austria, Belgium, Canada, France, Germany, Indonesia, Japan, Korea, Malaysia, New Zealand, Paraguay, Poland, Russia, Sweden, Switzerland, Thailand, the U.K., the U.S.A., and Vietnam. For more information, please visit the website: [www.sc-top.org.tw](http://www.sc-top.org.tw)

## TOCFL Testing in Taiwan

2016 TOCFL schedule

■ [www.sc-top.org.tw/english/registration.php](http://www.sc-top.org.tw/english/registration.php)

Registration

■ [reg.sc-top.org.tw](http://reg.sc-top.org.tw)

Contact the Steering Committee for the Test of Proficiency-Huayu (SC-TOP)

■ TEL: +886-2-77148201  
+886-2-77148205

■ FAX: +886-2-26014181

■ E-mail: [service@sc-top.org.tw](mailto:service@sc-top.org.tw)

■ Website: [www.sc-top.org.tw/](http://www.sc-top.org.tw/)

■ Mailing Address: P.O. Box 7-400 Taipei City 10699 Taiwan

■ Location: 7F, Information and Academic Building, No. 2, Section 1, Ren-ai Road, Lin-kou District, New Taipei City 24449, Taiwan (R.O.C.)

# Chinese Learning Centers In Taiwan

North  
Central  
South  
East



## NORTH

### 1. Taipei

**China University of Science and Technology**  
Language Center  
[aca.cust.edu.tw/language/](http://aca.cust.edu.tw/language/)  
**Chinese Culture University**  
Mandarin Learning Center  
[mlc.sce.pccu.edu.tw](http://mlc.sce.pccu.edu.tw)  
**Ming Chuan University**  
Mandarin Studies & Culture Center  
[mscc.mcu.edu.tw](http://mscc.mcu.edu.tw)  
**National Chengchi University**  
Chinese Language Center  
[mandarin.nccu.edu.tw/index.php](http://mandarin.nccu.edu.tw/index.php)  
**National Taipei University of Education**  
Chinese Language Education Center  
[r9.ntue.edu.tw](http://r9.ntue.edu.tw)  
**National Taipei University of Technology**  
Chinese Language Training Center  
[cltc.ntut.edu.tw](http://cltc.ntut.edu.tw)  
**National Taiwan Normal University**  
Mandarin Training Center  
[www.mtc.ntnu.edu.tw](http://www.mtc.ntnu.edu.tw)  
**National Taiwan University**  
Chinese Language Division, Language Center  
[cld.liberal.ntu.edu.tw](http://cld.liberal.ntu.edu.tw)  
**National Taiwan University**  
International Chinese Language Program  
[iclp.ntu.edu.tw](http://iclp.ntu.edu.tw)  
**Shih Chien University**  
Chinese Language Center  
[chinese.usc.edu.tw/](http://chinese.usc.edu.tw/)  
**Soochow University**  
Chinese Language Center  
[mandarin.scu.edu.tw](http://mandarin.scu.edu.tw)  
**Taipei Chengshih University of Science and Technology**  
Mandarin Center  
[www.ssw.tpcu.edu.tw](http://www.ssw.tpcu.edu.tw)  
**Tamkang University**  
Chinese Language Center  
[www.dce.tku.edu.tw](http://www.dce.tku.edu.tw), [chinesecenter.weebly.com](http://chinesecenter.weebly.com)

### 2. New Taipei City

**Fu Jen Catholic University**  
Center of Chinese Language and Culture  
[www.lc.fju.edu.tw](http://www.lc.fju.edu.tw)

### 3. Keelung

### 4. Taoyuan

**Chung Yuan Christian University**  
Mandarin Learning Center  
[mlc.cycu.edu.tw](http://mlc.cycu.edu.tw)  
**Kainan University**  
Chinese Learning Center  
[www.knu.edu.tw/CLC](http://www.knu.edu.tw/CLC)  
**Lunghwa University of Science and Technology**  
Chinese Language Center  
[www.lhu.edu.tw/m/ctc/index.html](http://www.lhu.edu.tw/m/ctc/index.html)  
**National Central University**  
Language Center  
[www.lc.ncu.edu.tw/main/clp/index.php](http://www.lc.ncu.edu.tw/main/clp/index.php)  
**Taoyuan Innovation Institute of Technology**  
Chinese Language Section  
[web.tiit.edu.tw/language/center/chinese/en\\_about.htm](http://web.tiit.edu.tw/language/center/chinese/en_about.htm)

### 5. Hsinchu

**Chung Hua University**  
Mandarin Training Center  
[international.chu.edu.tw/1page5/super\\_pages.php?ID=1page502](http://international.chu.edu.tw/1page5/super_pages.php?ID=1page502)  
**National Chiao Tung University**  
Chinese Language Division, LTRC  
[mandarin.nctu.edu.tw](http://mandarin.nctu.edu.tw)

### 6. Yilan

**Fo Guang University**  
Chinese Language Instruction Center  
[www.fgu.edu.tw/~chinlang/clc.htm](http://www.fgu.edu.tw/~chinlang/clc.htm)

## CENTRAL

### 7. Miaoli

**National United University**  
Chinese Language Center  
[nuuclc.weebly.com/](http://nuuclc.weebly.com/)

### 8. Taichung

**Feng Chia University**  
Chinese Language Center  
[www.clc.fcu.edu.tw](http://www.clc.fcu.edu.tw)  
**National Chung Hsing University**  
Chinese Program  
[cp.nchu.edu.tw](http://cp.nchu.edu.tw)  
**National Taichung University of Education**  
Chinese Language Center  
[clc.ntcu.edu.tw/index\\_en.php](http://clc.ntcu.edu.tw/index_en.php)  
**Providence University**  
Chinese Language Education Center  
[clcc.pu.edu.tw](http://clcc.pu.edu.tw)  
**Tunghai University**  
Chinese Language Center  
[clc.thu.edu.tw](http://clc.thu.edu.tw)

### 9. Changhua

**Chienkuo Technology University**  
Language Center  
[enlc.ctu.edu.tw/bin/home.php](http://enlc.ctu.edu.tw/bin/home.php)  
**National Changhua University of Education**  
Language Center  
[lc.ncue.edu.tw](http://lc.ncue.edu.tw)

### 10. Yunlin

### 11. Nantou

### 12. Chiayi

**National Chiayi University**  
Language Center  
140, 130, 204, 81

## SOUTH

### 13. Tainan

**Kun Shan University**  
Chinese Language Center  
[www.ksu.edu.tw/eng/unit/D/T/NC/MLC/](http://www.ksu.edu.tw/eng/unit/D/T/NC/MLC/)  
**Nan Jeon University of Science and Technology**  
Chinese Language Center  
[www.nju.edu.tw/hjclc](http://www.nju.edu.tw/hjclc)  
**National Cheng Kung University**  
College of Liberal Arts, Chinese Language Center  
[kclcc.ncku.edu.tw](http://kclcc.ncku.edu.tw)  
**Southern Taiwan University of Science and Technology**  
Chinese Language Center  
[clc.stust.edu.tw/en](http://clc.stust.edu.tw/en)  
**Taiwan Shoufu University**  
Chinese Language Center  
[www.tsu.edu.tw/a/webs/index.php?account=Clear](http://www.tsu.edu.tw/a/webs/index.php?account=Clear)

### 14. Kaohsiung

**I-Shou University**  
Language Center  
[www.isu.edu.tw/interface/overview.php?dept\\_mno=335](http://www.isu.edu.tw/interface/overview.php?dept_mno=335)  
**Kao Yuan University**  
Chinese Language Center  
[www.oia.kyu.edu.tw/clc/](http://www.oia.kyu.edu.tw/clc/)  
**National Kaohsiung Normal University**  
Center of Language and Culture Teaching  
140, 127, 54, 83/  
**National Sun Yat-sen University**  
Chinese Language Center  
[clc.nsysu.edu.tw](http://clc.nsysu.edu.tw)  
**National University of Kaohsiung**  
Division of Chinese Language, Language Center  
[www2.nuk.edu.tw/clc/lc/](http://www2.nuk.edu.tw/clc/lc/)  
**Wenzao Ursuline University of Languages**  
Chinese Language Center  
[c040.wzu.edu.tw](http://c040.wzu.edu.tw)

### 15. Pingtung

**National Pingtung University**  
Language Center  
[lcc.nptu.edu.tw/bin/home.php](http://lcc.nptu.edu.tw/bin/home.php)  
**National Pingtung University of Science and Technology**  
Chinese Language Center  
[clc.npust.edu.tw](http://clc.npust.edu.tw)

## EAST

### 16. Hualien

**Tzu Chi University**  
Center for Language Studies  
[www.language.tcu.edu.tw](http://www.language.tcu.edu.tw)

### 17. Taitung

## OFFSHORE ISLANDS

### 18. Penghu

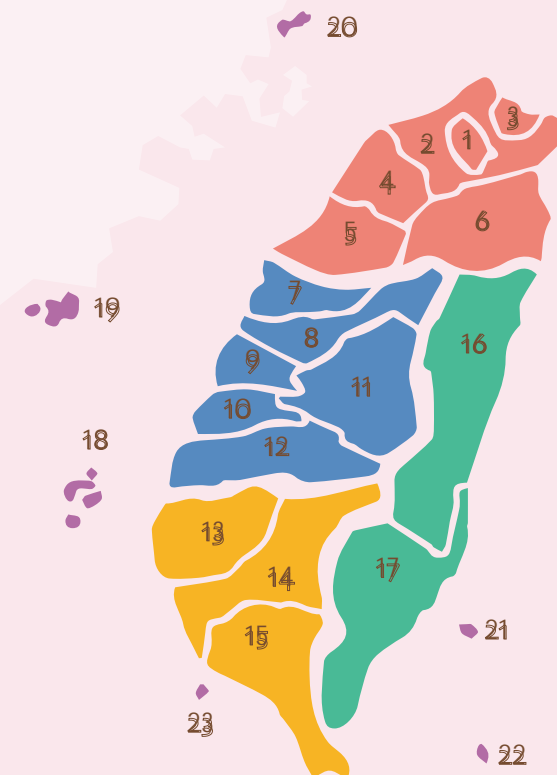
### 19. Kinmen

### 20. Matsu

### 21. Green Island

### 22. Lanyu

### 23. Little Liuqiu







# China University of Science and Technology

Language Center | Taipei City

No. 245, Section 3 Academia Road, Nangang District, Taipei City 11581, Taiwan (R.O.C.)  
 Tel: +886-2-27821862 ext.271  
 Fax: +886-2-27852344  
 Email: language@www.cust.edu.tw  
 Website: aca.cust.edu.tw/language/



## Student Eligibility & Age

Applicants must be aged at least 18 and have obtained a high school or secondary school diploma.

## Distinctive Features

Established May, 2011 (with Ministry of Education approval)  
 Curriculum: Basic, Intermediate, and Advanced  
 Hours of Study: 6-month program (360 hours)  
 Additional Courses: Introduction to Chinese Culture

## Application

Mail the application form and other necessary documents to: Language Center, China University of Science and Technology  
 No. 245, Section 3 Academia Road, Nangang District, Taipei City 11581, Taiwan

## Scholarships

N/A

## Accommodation

1. **Dormitory:** All international students will be provided with on-campus dormitory-style housing.  
 Dormitory Fee: Deposit ~US \$50  
 Cost per term: Male dormitory (2-bed room): ~US \$450  
 Female dormitory (4-bed room): ~US \$400

2. **Off-campus rental accommodation:**  
 Off-campus shared room or studio costs approximately US \$150 to \$300 (per month).  
 Information provided by university (Chinese only): <http://studaffirs.cust.edu.tw/counsel/dorm.html>  
 Information provided by Tsuei Ma Ma Foundation: <http://www.tmm.org.tw/English/index.html>

## Location & Facilities

Location: Taipei City  
 Facilities:  
 1. Library  
 2. Art gallery  
 3. Computers and internet access  
 4. Language center facilities and classrooms

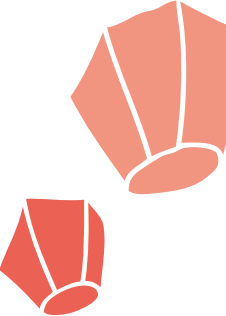
Course Type	Period of Study	Start Date	Total Hours	Class Size	Tuition & Registration Fee (NTD)	Tuition & Registration Fee (USD)	Application Deadline
Individual Program	Please contact the Language Center for more information.			1 person	NT \$575 per hour, plus application fee NT \$575	~US \$18 per hour, plus application fee ~US \$18	One month before the starting date of each term
Short-Term Program	1-4 weeks	Please contact the Language Center for more information.			Please contact the Language Center for more information.		One month before the starting date of each term



# Chinese Culture University

Mandarin Learning Center | Taipei City

Room 406, 4F, No. 231 Jianguo S. Road Section 2, Taipei City 10659, Taiwan, (R.O.C.)  
 Tel: +886-2-27005858 ext.8131~8136  
 Fax: +886-2-27081257  
 Email: mlc@sce.pccu.edu.tw  
 Website: mlc.sce.pccu.edu.tw



## Student Eligibility & Age

16 years or older

## Distinctive Features

The Mandarin Learning Center (MLC) offers practical Mandarin courses to non-native speakers of the Chinese language from across 220 countries worldwide. MLC is renowned for providing the largest variety of Mandarin Language training in Taiwan. Courses range from 2-week short-term courses to 72-week courses.  
 The large variety of courses caters for beginners to advanced learners, children to adult learners, and even teacher training certification programs for teaching Chinese as a Second Language (TCSL).

## Application

Please prepare all the required documents in English or in Chinese. The documents will not be returned to you after submitting, so please make copies for yourself if needed. We suggest that you apply using the online system. Online registration: <http://scedna.sce.pccu.edu.tw/MLCSite/Member/MemberJoin.aspx>

## Scholarships

N/A

## Accommodation

MLC provides a range of accommodation at different prices for students during their study stay in Taiwan. Choose according to your personal budget: you can enroll in our home-stay program or stay at a fancy 4-star hotel. All the accommodation is conveniently located in the heart of Taipei city.  
 We are one of a very small number of universities and Mandarin learning centers that provide both accommodation and home-stays.

## Location & Facilities

The university is located in Taipei on Jianguo South Road. It has a new modern teaching building, providing good lighting, and air-conditioned comfort, as part of the high quality teaching environment. Each classroom has assisted-teaching equipment, and the basement has a convenient digital learning center with internet access to facilitate students' independent learning.

Course Type	Period of Study	Start Date	Total Hours	Class Size	Tuition & Registration Fee (NTD)	Tuition & Registration Fee (USD)	Application Deadline
Intensive Class	3 months (12 weeks)	Every month	165 hours	10-12 people	NT \$22,000 NT \$300	~US \$733 ~US \$10	Three weeks before classes begin
Individual Class	Decided by student	Decided by student	Minimum 20 hours	1-4 people	Jianguo Campus: 1 hour: NT \$700/person Zhongxiao Campus: 1 hour: NT \$600/person	~US \$300-\$400	A week before classes begin
To the Point Class - for Expatriates and Foreign Working Nationals	8 weeks	Every week	16 hours	1-4 people	NT \$4,000 NT \$300	~US \$133 ~US \$10	A week before classes begin
Summer Mandarin Language Camp	6 weeks	Every July and August	240 hours	10-15 people	(1) One term: NT \$20,000 (2) Two terms: NT \$36,000 (3) Registration: NT \$300 Earlybird Register (1) One term: NT \$18,000 (2) Two terms: NT \$32,400	(1) One term: ~US \$667 (2) Two terms: ~US \$1,200 (3) Registration: ~US \$10 Earlybird Register (1) One term: ~US \$600 (2) Two terms: ~US \$1,080	Enroll from 01/11/2015 until fully booked
Teacher Training Certification Programs for Teaching Chinese as a Second Language. (TCSL)	About 2 months	Every month	96 hours	6-20 people	NT \$17,000	~US \$567	Before the 1st day of the course





## Ming Chuan University

Mandarin Studies and Culture Center (MSCC) | Taipei City

250 Zhong Shan N. Road Section 5, Taipei City 11103, Taiwan (R.O.C.)  
3F-8F, No. 130 Jihe Road, Shilin District, Taipei City 111, Taiwan (R.O.C.)  
Tel: +886-2-28824564 ext.2405  
Fax: +886-2-88613491  
Email: msc@mcu.edu.tw  
Website: msc.mcu.edu.tw/



### Student Eligibility & Age

Aged at least 10 years old

### Distinctive Features

A new term begins each season and instruction is given all year round. Classes are arranged from beginner to advanced levels. Small-group classes (of about 6-10 students) create an optimal learning situation for developing language skills. Classes are conducted in both Mandarin and English.

The program provides orientation, field trips and social activities to encourage communication with Taiwanese students and to develop a wider comprehension of Chinese culture & society.

### Application

Please email msc@mcu.edu.tw or download an application form from <http://mscc.mcu.edu.tw/zh-hant/node/125>

### Scholarships

N/A

### Accommodation

1. All rooms are equipped with desks, book-shelves, built-in wardrobes, and bunks.
2. Students are responsible for providing their own pillow, mattress, bedding sheets, and other personal necessities.
3. Each room has internet access, and an air-conditioner, and laundry, lounge facilities are provided.

<http://mscc.mcu.edu.tw/en/node/168>

### Location & Facilities

1. Our Taipei campus & Jihe campus are both just 5 to 8 minutes' walk from MRT Jiantan station.
2. Dormitory accommodation for international students available at all 3 campuses: Taipei, Jihe, & Taoyuan.
3. International students counselors and a Foreign Student Affairs Department assist students living abroad.
4. Professional teachers are native speakers of standard Mandarin, and classes are small with 6-8 students.
5. Activities to facilitate communication with Taiwanese students.
6. A free Chinese student tutor provided for each foreign student.
7. Individual attention from instructors.

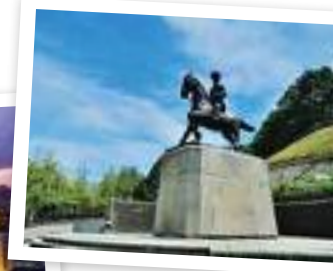
Course Type	Period of Study	Start Date	Total Hours	Class Size	Tuition & Registration Fee (NTD)	Tuition & Registration Fee (USD)	Application Deadline
Spring Quarter (Regular Class)	14/03/2016-03/06/2016	14/03/2016	180 hours	6-10 students per class	NT \$30,000	-US \$937.5	02/2016
Summer Quarter (Regular Class)	13/06/2016-02/09/2016	13/06/2016	180 hours	6-10 students per class	NT \$30,000	-US \$937.5	05/2016
Autumn Quarter (Regular Class)	12/09/2016-02/12/2016	12/09/2016	180 hours	6-10 students per class	NT \$30,000	-US \$937.5	08/2016
Winter Quarter (Regular Class)	05/12/2016-06/03/2017	05/12/2016	180 hours	6-10 students per class	NT \$30,000	-US \$937.5	11/2016
2016 Mandarin Summer Camp	Flexible schedule	Customized	Customized	6-15 students per class	Please contact MCU, MSCC for more details.		
International Mandarin Study Tour	Flexible schedule	Customized	Customized	6-15 students per class	Please contact MCU, MSCC for more details.		



## National Chengchi University

Chinese Language Center | Taipei City

No. 64, Section 2, Zhinan Road, Wenshan District, Taipei City 11605, Taiwan (R.O.C.)  
Tel: +886-2-29387141  
+886-2-29393091 ext.62055, 62666  
Fax: +886-2-29396353  
Email: mandarin@nccu.edu.tw  
Website: mandarin.nccu.edu.tw/index.php



### Student Eligibility & Age

Open to students aged at least 18 years who have a high school diploma or its equivalent. Applicants under 18 who have a high school diploma or its equivalent are also accepted.

### Distinctive Features

The Chinese Language Center at National Chengchi University has had more than 20 years of experience in teaching Mandarin as a foreign language. It provides non-credit regular and short-term Mandarin courses for international students, and TCSL (Teaching Chinese as a Second Language) training courses for teachers.

### Application

Applications for the regular course should be posted to the address above.

Applications for the international summer Mandarin program can be lodged online.

### Scholarships

CLC offers a number of scholarships each term to acknowledge students who have a positive learning attitude and achieve an excellent performance.

### Accommodation

1. Campus dorm accommodation for incoming students (20 beds).
2. NCCU I-House (20 beds in total: some are double rooms, and some are single rooms).
3. Due to limited availability, allocation of accommodation will be decided by drawing lots.
4. At the beginning of each fall term, we recruit NCCU student volunteers to assist students to find a rental place.

### Location & Facilities

Located in southeast Taipei, NCCU is nationally acclaimed for its teaching quality, excellent facilities and instructional aids. NCCU campus facilities, the health service center, computer center, sports center, and the central library are all available to CLC students.

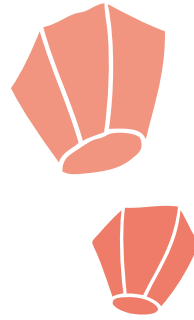
Course Type	Period of Study	Start Date	Total Hours	Class Size	Tuition & Registration Fee (NTD)	Tuition & Registration Fee (USD)	Application Deadline
Regular Class	07/03/2016-27/05/2016	07/03/2016	180 hours	7-10 people per class	NT \$30,500	-US \$953	31/12/2015
	06/06/2016-26/08/2016	06/06/2016	180 hours	7-10 people per class	NT \$30,500	-US \$953	31/03/2016
	05/09/2016-25/11/2016	05/09/2016	180 hours	7-10 people per class	NT \$30,500	-US \$953	30/06/2016
	05/12/2016-24/02/2017	05/12/2016	150 hours	7-10 people per class	NT \$25,700	-US \$803	30/09/2016
International Summer Mandarin Class	04/07/2016-29/07/2016	04/07/2016	60 hours	7-10 people per class	NT \$15,500	-US \$484	01/02/2016-29/04/2016
	01/08/2016-26/08/2016	01/08/2016	60 hours	7-10 people per class	NT \$15,500	-US \$484	01/02/2016-29/04/2016
Students who enroll in a course for BOTH July and August will have a tuition fee discount: NT \$30,500 (-US \$953).							
2016 Mandarin Summer Camp	2 months	07/2016 (Customized)	Customized	6-11 people per class	Please contact CLC, NCCU for more details		15/04/2016 (group application only)



# National Taipei University of Education

Chinese Language Education Center | Taipei City

Room Y202 (2F) Du-Xing Building, No. 134, Section 2 Heping E. Road, Daan District, Taipei City 10671, Taiwan (R.O.C.)  
Tel: +886-2-27321104 ext.82025  
Fax: +886-2-27325950  
Email: clec@tea.ntue.edu.tw  
Website: r9.ntue.edu.tw/



## Student Eligibility & Age

Have at least a high school diploma, and be over 18 years old

## Distinctive Features

NTUE is one of the prestige academic institutes in Taiwan. It was founded in 1896 and has a history of 117 years of excellence. NTUE plays an important role in the development of primary education and teacher training programs and is highly regarded as an essential component of educational services.

## Application

Email to: clec@tea.ntue.edu.tw or post to: Room Y202 (2F) Du-Xing Building, No. 134 Section 2, Heping E. Road, Daan District, Taipei City 10671, Taiwan (R.O.C.)

## Scholarships

N/A

Course Type	Period of Study	Start Date	Total Hours	Class Size	Tuition & Registration Fee (NTD)	Tuition & Registration Fee (USD)	Application Deadline
Regular Class	3 months	01/03/2016	155 hours	6-13 people	NT \$26,000	~US \$866	22/02/2016
Mandarin Summer Camp	4 weeks	06/2016	137 hours	8-14 people	NT \$39,500- \$43,000	~US \$1,317- ~US \$1,433	Enroll from December, 2015 until fully booked
Individual Class	At any time	At any time	Minimum 30 hours	1 or more	NT \$600/hour +NT \$1,000	~US \$20 per hour +~US \$33	At any time

## Accommodation

Our university dormitory has limited space so CLEC is unable to provide accommodation for foreign students. Our administrative staff will help you to find a room off-campus.

## Location & Facilities

Located in the central part of Taipei, close to MRT Technology Building Station.



# National Taipei University of Technology

Chinese Language Training Center | Taipei City

2F, Guang Hua Building, Taipei Tech No.1, Section 3 Zhongxiao E. Road, Taipei City 10608, Taiwan, (R.O.C.)  
Tel: +886-2-27712171 ext.1710, 1746, 1748  
Fax: +886-2-27219524  
Email: cltc@mail.ntut.edu.tw  
Website: www.cltc.ntut.edu.tw/bin/home.php



## Student Eligibility & Age

No restrictions

## Distinctive Features

The Chinese Language Training Center offers a complete and professional Chinese language course that aims to nurture foreign students' Chinese language proficiency and enable them to use Chinese in daily conversation. In addition, we want to nurture our students to be open-minded and globalized, understand and appreciate Chinese culture, and promote international cooperation and cultural exchange. This center has been established to not only help people from different cultural and linguistic backgrounds learn the Chinese language but to also fall in love with Chinese and the beauty of Taiwan.

## Application

Fill out the application online (<http://cltc.ntut.edu.tw/files/87-1143-1267.php>) and send the required documents by post or submit them in person.

## Scholarships

N/A

## Accommodation

N/A

## Location & Facilities

Taipei Tech is a university located in central Taipei. It has convenient transportation such as the MRT metro station and bus stops nearby, so it's easy for students to get to and to go and visit attractions in Taipei. With this excellent environment and strong teaching resources, Taipei Tech is a perfect choice for students.

Course Type	Period of Study	Start Date	Total Hours	Class Size	Tuition & Registration Fee (NTD)	Tuition & Registration Fee (USD)	Application Deadline
Regular Class	1 month	Each month	24 hours	2-4 people	NT \$12,000	~US \$375	A month before classes begin
	3 months	Each month	72 hours	2-4 people	NT \$25,000	~US \$785	
	6 months	Each month	144 hours	2-4 people	NT \$54,000	~US \$1,688	
	3 months	Each month	171 hours	6-10 people	NT \$26,000	~US \$ 866	
Tutor Class	1 month	At any time	24 hours	1 person	NT \$17,000	~US \$531	A month before classes begin
	3 months	At any time	72 hours	1 person	NT \$39,500	~US \$1,235	
	6 months	At any time	144 hours	1 person	NT \$77,000	~US \$2,410	





# National Taiwan Normal University

Mandarin Training Center | Taipei City

No. 162, Section 1, Heping East Road, Taipei City 10610, Taiwan (R.O.C.)  
Tel: +886-2-77345130  
Fax: +886-2-23418431  
Email: [mtc@mtc.ntnu.edu.tw](mailto:mtc@mtc.ntnu.edu.tw)  
Website: [www.mtc.ntnu.edu.tw](http://www.mtc.ntnu.edu.tw)



## Student Eligibility & Age

At least a high school diploma  
18 years old or older

## Distinctive Features

MTC is the oldest and largest Chinese language center in Taiwan. It was founded in 1956. All classes are small in size and taught by experienced teachers, following modern language pedagogy and a standardized curriculum. The learning goals and course levels are compatible with international language proficiency standards (CEFR and ACTFL.)

## Application

1. Online applications: <http://www.mtc.ntnu.edu.tw/application/>
2. By post: Application materials should be sent to MTC's mailing address: MTC, NTNU, No. 162 Heping East Road Section 1, Taipei 10610, Taiwan
3. Submitted in person

## Scholarships

N/A

## Accommodation

MTC students are not eligible for university dormitory accommodation. Students usually look for long-term accommodation in hostels, such as NTNU Hall (<http://www.sce.ntnu.edu.tw/eweb/>). They can also search for hostel accommodation near Guting or Taipower Building Station on [www.hostelworld.com](http://www.hostelworld.com). MTC collects rental ads around the neighborhood to assist students find accommodation.

## Location & Facilities

MTC is located in the Taipei city center area and is reachable by the MRT (Dongmen, and Guting are the closest stations) and many buses. Classrooms are fitted with projectors. Language/computer labs, library, wifi, and academic counseling are provided.

Course Type	Period of Study	Start Date	Total Hours	Class Size	Tuition & Registration Fee (NTD)	Tuition & Registration Fee (USD)	Application Deadline
Regular Class	3 months	07/03/2016 02/06/2016	171 hours	6-10 people	NT \$26,200	-US \$782	One month before the starting date of each term
Intensive Class	3 months	01/07/2016 03/09/2016 01/12/2016	171 hours	6-10 people	NT \$33,400	-US \$997	
Summer Regular Class	2 months	01/07/2016	114 hours	6-10 people	NT \$17,800	-US \$531	
Summer Intensive Class	2 months	01/7/2016	137 hours	5-8 people	NT \$22,600	-US \$675	
3-week Express Program	3 weeks	03/2016 07/2016 08/2016	60 hours	6-10 people		-US \$1,000	



# National Taiwan University

Chinese Language Division, Language Center | Taipei City

No. 170, Section 2 Xinhai Road, Daan District, Taipei City 10663, Taiwan (R.O.C.)  
Tel: +886-2-33663417  
Fax: +886-2-83695042  
Email: [cld222@ntu.edu.tw](mailto:cld222@ntu.edu.tw)  
Website: [cld.liberal.ntu.edu.tw](http://cld.liberal.ntu.edu.tw)



## Student Eligibility & Age

The course is open to people who have a high school diploma, or its equivalent. Applicants under 18 who have a high school diploma or its equivalent are also accepted.

## Application

Application details can be found and an application form can be downloaded from <http://cld.liberal.ntu.edu.tw>. Please email or mail all your application documents to us as soon as possible before the deadline indicated.

## Scholarships

N/A

## Accommodation

Students need to arrange their own accommodation outside the campus. Housing related information is available here: <http://cld.liberal.ntu.edu.tw>

## Location & Facilities

We are located in downtown Taipei City, with convenient transportation (MRT and buses), and wide-ranging and top-grade campus facilities. These include a multi-media library, sports center, students' lounge (equipped with computers, and internet) and classrooms equipped with multi-media equipment.

Course Type	Period of Study	Start Date	Total Hours	Class Size	Tuition & Registration Fee (NTD)	Tuition & Registration Fee (USD)	Application Deadline
General Course	12 weeks	29/02/2016	180 hours	5-7 people	NT \$35,500	-US \$1,203	16/01/2016
		30/05/2016					30/04/2016
		29/08/2016					30/07/2016
General Course	10 weeks	28/11/2016	150 hours	5-7 people	NT \$29,600	-US \$1,003	29/10/2016



## National Taiwan University

International Chinese Language Program (ICLP) | Taipei City

3-4F, No. 170, Section 2 Xinhai Road, Daan District, Taipei City 106, Taiwan (R.O.C.)

Tel: +886-2-23639123

Fax: +886-2-23626926

Email: iclp@ntu.edu.tw

Website: iclp.ntu.edu.tw/



### Student Eligibility & Age

1. A degree candidate at an accredited university or college.
2. A university or college degree holder.
3. A professional whose career requires use of Chinese.

### Distinctive Features

1. 8 levels ranging from absolute beginner to advanced.
2. 3 group classes (2-4 students) and 1 individual class every day (intensive training).
3. Various courses, including Literature, Business, Media, and others.
4. Total Chinese immersion environment.
5. Suitable for professional people, such as journalists, professors, and diplomats.

### Application

Download the Application Form from our website "Admissions (How To Apply)" (<http://iclp.ntu.edu.tw/>), and then email it and all the required documents to iclp@ntu.edu.tw or post your application materials to the address above.

Course Type	Period of Study	Start Date	Total Hours	Class Size	Tuition & Registration Fee (NTD)	Tuition & Registration Fee (USD)	Application Deadline
Summer Program (Intensive Chinese Course)	9 Weeks	07/06/2016	168 hours	3-4 people	NT \$130,200	-US \$4,200	31/03/2016
Academic Year Program (Intensive Chinese Course)	09/09/2016-16/12/2016 (Fall)	09/09/2016	232 hours	3-4 people	Fall: NT \$130,200	Fall: -US \$4,200	30/04/2016
	130/12/2016-10/03/2017 (Winter) 17/03/2017-26/05/2017 (Spring)	30/12/2016 (Winter) 17/03/2017 (Spring)	172 hours		Spring, Winter: NT \$122,450	Spring, Winter: -US \$3,950	

### Scholarships

N/A

### Accommodation

On-campus and off-campus accommodation:  
[http://iclp.ntu.edu.tw/index.php?option=com\\_content&view=category&layout=blog&id=88&Itemid=101&lang=en](http://iclp.ntu.edu.tw/index.php?option=com_content&view=category&layout=blog&id=88&Itemid=101&lang=en)

### Location & Facilities

Location: Central Taipei (National Taiwan University).  
Facilities: 37 classrooms, library, lecture hall, student lounge, language lab



## Shih Chien University

USC Chinese Language Center | Taipei City

No. 70 Dazhi Street, Zhongshan District, Taipei City 10462, Taiwan (R.O.C.)

Tel: +886-2-25381111 ext.2550

Fax: +886-2-25384748

Email: Chinese@g2.usc.edu.tw

Website: chinese.usc.edu.tw/, FB: <https://www.facebook.com/chinese.usc/>



### Student Eligibility & Age

At least eighteen years old expatriates who interested to learn Chinese or plan to obtain TOCFL.

### Distinctive Features

1. Our teaching objective is to develop and strengthen students' Chinese communication skills. We provide regular Mandarin programs, 4 terms a year. These courses are divided into beginner, lower-intermediate, intermediate and advanced according to students' Chinese proficiency.
2. Cultural exchange courses such as calligraphy, martial arts, chess and traditional Chinese painting are offered as an opportunity for students to experience Chinese culture.
3. We also provide language exchange programs extracurricular activities.
4. Study mate who can help your studying.

### Application

How to apply?

You can apply through e-mail or at counter following procedures below:

1. Fill out the form and enclose required documents.
2. CLC reviews all applications.
3. Issuing admission letters. For those who passed document review will receive an admission letter issued by CLC for visa applying purpose.

### Scholarships

N/A

### Accommodation

Does the school have dormitory for me?

No, now only foreign degree and exchange students are offered dormitory rooms through the arrangement of the Office of International Affair. However, the students of CLC are not eligible for a dormitory application. You can share or rent apartments nearby.

### Location & Facilities

Located in Dazhi, the university is benefited by the convenience of the MRT system and city buses. To facilitate learning, CLC has a self-access room with multi-media equipment, where plenty of books and online materials for Chinese learning are available, creating a cozy, resourceful and adaptive learning environment for students.

Course Type	Period of Study	Start Date	Total Hours	Class Size	Tuition & Registration Fee (NTD)	Tuition & Registration Fee (USD)	Application Deadline
Regular Term Winter Term	02/12/2015–26/02/2016	02/12/2015	150 hours	3–10 people	NT \$28,500	~US \$900	N/A
Regular Term Spring Term	02/03/2016–20/05/2016	02/03/2016	150 hours	3–10 people	NT \$28,500	~US \$900	N/A
Regular Term Summer Term	01/06/2016–19/08/2016	01/06/2016	150 hours	3–10 people	NT \$28,500	~US \$900	N/A
Regular Term Fall Term	01/09/2016–18/11/2016	01/09/2016	150 hours	3–10 people	NT \$28,500	~US \$900	N/A
Short-term Program Winter	24/01/2016–05/02/2016	24/01/2016	14 days	>10 people	NT \$30,000	~US \$1,000	A month before the start date
					Prices can be adjusted in accordance with needs		
Short-term Program Summer	03/07/2016–24/07/2016 02/08/2016–23/08/2016	03/07/2016 02/08/2016	21 days	>10 people	NT \$33,000	~US \$1,200	A month before the start date
					Prices can be adjusted in accordance with needs		
Short-term Program Summer	03/07/2016–09/08/2016	03/07/2016	42 days	>10 people	NT \$62,000	~US \$2,400	A month before the start date
					Prices can be adjusted in accordance with needs		





## Soochow University

Chinese Language Center | Taipei City

Rm. S101, No. 70 Linxi Road, Shilin District, Taipei City 11102, Taiwan (R.O.C.)  
Tel: +886-2-28819471 ext.5922~25  
Fax: +886-2-28838350  
Email: [mandarin@scu.edu.tw](mailto:mandarin@scu.edu.tw)  
Website: [mandarin.scu.edu.tw](http://mandarin.scu.edu.tw)



### Student Eligibility & Age

Regular course: for high school graduates  
Study camp: for overseas students aged 16–22

### Distinctive Features

CLC is located in the cultural axis of Taipei City. Our objectives are: "To transmit knowledge of Chinese culture and cultivate Chinese language skills."  
We hope to guide our students to teach Chinese abroad, promote international education, intensify overseas Chinese education, and provide professional training for overseas Chinese learners and educators.

### Application

Email us at [mandarin@scu.edu.tw](mailto:mandarin@scu.edu.tw) or go to our website at [mandarin.scu.edu.tw](http://mandarin.scu.edu.tw)

### Scholarships

N/A

Course Type	Period of Study	Start Date	Total Hours	Class Size	Tuition & Registration Fee (NTD)	Tuition & Registration Fee (USD)	Application Deadline
Regular Class Quarter Program	3 months	03/2016	159 hours / 138 hours (for winter program)	5–12 people	NT \$30,500 (NT \$27,500 for winter program)	~US \$953 (~US \$860 for winter program)	One month before the starting date
		06/2016					
		09/2016					
		12/2016					
Summer/Winter Study Camp	3 weeks	06/2016–08/2016	90 hours	12 people minimum	NT \$39,000	~US \$1,219	One month before the starting date
		01/2016					
Chinese Vacation Program	5, 10, and 14 days	Contact for arrangement	6, 12 and 18 hours	2–6 people	NT \$7,690 NT \$15,380 NT \$21,532	~US \$240 ~US \$481 ~US \$673	Contact for arrangement
Customized Program	Programs can be tailor-made on request to meet clients' needs and schedule.						

### Accommodation

Your stay and your study achieve a fusion by taking place in the same building. It provides complete living facilities with twin-share and 4-people rooms, and resident advisors and security on site. This will boost your language learning.  
A special rate is offered for long-term lodgers. Email contact: [mandarin@scu.edu.tw](mailto:mandarin@scu.edu.tw)

### Location & Facilities

Lush and green, Soochow University CLC is located on Waishuanhsi Campus, near National Palace Museum and Shihlin Night Market. Easy to get around and explore Taipei. Facilities include digital classrooms, free WiFi, school library, gym, kitchen, lounge, 24/7 study room and PC lab with online shadowing pronunciation system.



## Taipei Chengshih University of Science and Technology

Mandarin Center | Taipei City

No. 2 Xueyuan Road, Beitou District, Taipei City 112, Taiwan (R.O.C.)  
Tel: +886-2-28285888  
Fax: +886-2-23319966  
Email: [flagvisa@yahoo.com.tw](mailto:flagvisa@yahoo.com.tw)  
Website: [www.ssw.tpcu.edu.tw](http://www.ssw.tpcu.edu.tw)



### Student Eligibility & Age

Have a senior high school diploma & be aged 18 or older

### Distinctive Features

TPCU Chinese Language Center is a department that specializes in helping foreign students to learn Mandarin. The Center's faculty personnel are all strictly screened and trained and well-qualified, and it is well-equipped with the necessary facilities to teach a wide range of students, taking into account their different personal levels of proficiency, from basic to advanced.

### Scholarships

N/A

### Accommodation

We don't provide dormitories for students, but we can provide them with all the pertinent information to help them find suitable housing accommodation.

1. Taipei international House for Student  
[www.geocities/SoHo/6271/ihmain.htm](http://www.geocities/SoHo/6271/ihmain.htm)
2. YMCA – Tel: +886-2-23313201
3. Happy Family 1. Tel: +886-2-23753443
4. Happy Family Hostel 2. Tel: +886-2-23952950

### Location & Facilities

Our TPCU Chinese Language Center is located in a lively section of Taipei, flanked by mountains on the side, and overlooking a protected wetland bird sanctuary. The university has comprehensive facilities for learning Mandarin Chinese, including an audio-visual classroom, computer classroom, and library.

Course Type	Period of Study	Start Date	Total Hours	Class Size	Tuition & Registration Fee (NTD)	Tuition & Registration Fee (USD)	Application Deadline
General Course	12 weeks	04/01/2016	180 hours	3–8 people	NT \$18,300	~US \$580	28/12/2015
	12 weeks	01/02/2016	180 hours	3–8 people	NT \$18,300	~US \$580	25/01/2016
	12 weeks	07/03/2016	180 hours	3–8 people	NT \$18,300	~US \$580	22/02/2016
	12 weeks	11/04/2016	180 hours	3–8 people	NT \$18,300	~US \$580	28/03/2016
	12 weeks	02/05/2016	180 hours	3–8 people	NT \$18,300	~US \$580	25/04/2016
	12 weeks	06/06/2016	180 hours	3–8 people	NT \$18,300	~US \$580	30/05/2016
	12 weeks	04/07/2016	180 hours	3–8 people	NT \$18,300	~US \$580	27/06/2016
	12 weeks	01/08/2016	180 hours	3–8 people	NT \$18,300	~US \$580	25/07/2016
	12 weeks	05/09/2016	180 hours	3–8 people	NT \$18,300	~US \$580	29/08/2016
	12 weeks	03/10/2016	180 hours	3–8 people	NT \$18,300	~US \$580	26/09/2016
	12 weeks	07/11/2016	180 hours	3–8 people	NT \$18,300	~US \$580	31/10/2016
	12 weeks	05/12/2016	180 hours	3–8 people	NT \$18,300	~US \$580	28/11/2016



## Tamkang University

Chinese Language Center | Taipei City

No. 5, Lane 199, Jinhua Street, Daan District, Taipei City 10650, Taiwan (R.O.C.)  
 Tel: +886-2-23216320 ext.8836, 8839  
 Fax: +886-2-23214036  
 Email: clc@mail2.tku.edu.tw  
 Website: www.dce.tku.edu.tw  
 chinesecenter.weebly.com



### Student Eligibility & Age

Regular Chinese Language Program: Applicants should be aged at least 18 and have completed secondary school or the equivalent.

Intensive Chinese Language Program: Designed for participants aged 14 to 30.

### Distinctive Features

The Chinese Language Center is administered by Tamkang University. We offer the following courses:

1. Regular Chinese Language Program (RCLP)
2. Intensive Chinese Language Program (ICLP)
3. Chinese Culture Summer Program (CCSP)
4. Customized Chinese Language Program (CCLP)

### Application

1. Regular Chinese Language Program (RCLP) — Download and fill out our Register and Application Form
2. Intensive Chinese Language Program (ICLP) — Apply online at <http://goo.gl/tXAwL2>
3. Chinese Culture Summer Program (CCSP) — Apply online at <http://chinese.center.weebly.com>
4. Customized Chinese Language Program (CCLP) — Apply online at <http://chinese.center.weebly.com>

### Scholarships

N/A

### Accommodation

We only provide dormitory accommodation for students doing the ICLP program (during Summer and Spring). For comfortable and moderately priced accommodation, please see Y HOTEL TAIPEI (website: [www.ymcahotel.tw](http://www.ymcahotel.tw)) and INTERNATIONAL HOUSE OF TAIPEI (website: <http://ymcahotel.tw>).

### Location & Facilities

#### Taipei Campus:

RCLP, CCSP, and CCLP: Address: No. 5, Lane 199, Jinhua Street, Taipei City  
 Facilities: Lounge, library, health center, and multi-media classrooms and lecture halls

#### Tamsui Campus:

ICLP: Address: 151 Yingzhuang Road, Tamsui District, New Taipei City  
 Facilities: Library, health center, multi-media classrooms and lecture halls, track & field, gym, swimming pool, sports hall, outdoor basketball court, tennis court, skating rink, cafeteria, art center

Course Type	Period of Study	Start Date	Total Hours	Class Size	Tuition & Registration Fee (NTD)	Tuition & Registration Fee (USD)	Application Deadline
Regular Class (Taipei Campus)	04/01/2016–22/04/2016	04/01/2016	225 hours	12–17 people	NT \$27,000	~US \$900	04/12/2015
	01/02/2016–20/05/2016	01/02/2016					01/01/2016
	07/03/2016–17/06/2016	07/03/2016					05/02/2016
	11/04/2016–22/07/2016	11/04/2016					04/03/2016
	02/05/2016–12/08/2016	02/05/2016					01/04/2016
	06/06/2016–16/09/2016	06/06/2016					01/05/2016
	04/07/2016–14/10/2016	04/07/2016					03/06/2016
	01/08/2016–11/11/2016	01/08/2016					01/07/2016
	05/09/2016–16/12/2016	05/09/2016					05/08/2016
	03/10/2016–13/01/2017	03/10/2016					02/09/2016
Intensive Class (Tamsui Campus)	07/11/2016–23/02/2017	07/11/2016	40–120 hours	10–15 people	NT \$32,000 NT \$40,000 NT \$65,000 NT \$40,000	~US \$1,000 ~US \$1,250 ~US \$2,100 ~US \$1,250	At least one month before starting date
	05/12/2016–24/03/2017	05/12/2016					
	06/03/2016–19/03/2016	06/03/2016					
	03/07/2016–23/07/2016	03/07/2016					
	03/07/2016–13/08/2016	03/07/2016					
	07/08/2016–27/08/2016	07/08/2016					



## Fu Jen Catholic University

Center of Chinese Language and Culture | New Taipei City

No. 510, Zhongzheng Road, Xinzhuang District, New Taipei City 24205, Taiwan (R.O.C.)  
 Tel: +886-2-29052414 / +886-2-29053721 / +886-2-29052487 / +886-2-29052071 / +886-2-29056480  
 Fax: +886-2-29052166  
 Email: flcg1013@mail.fju.edu.tw  
 Website: www.lc.fju.edu.tw



### Student Eligibility & Age

No limit. Students aged below 18 require a guardian or friend to assist them during their stay in Taiwan.

### Distinctive Features

The Center of Chinese Language and Culture was established in 1964, and it is one of the oldest non-degree Chinese language learning centers in Taiwan.

1. ISO 29990 certified.
2. Flexibility & variety in class arrangement.
3. Teaches using traditional or simplified Chinese characters, and Zhuyin or Pinyin.
4. Small class sizes.
5. Language learning is combined with cultural classes & activities.
6. A testing center of the Test of Chinese as a Foreign Language (TOCFL).

### Application

The application form can be downloaded from the website of the Center of Chinese Language and Culture (<http://www.lc.fju.edu.tw>), or you can request one by emailing or phoning the Center of Chinese Language and Culture office.

For more information, please visit our website: <http://www.lc.fju.edu.tw>.

### Scholarships

N/A

### Accommodation

1. Dormitory: limited number of rooms in the university dormitories. Facilities in these rooms include: Air conditioning, bed, table, chair, clothes closet, and telephone (free incoming calls), and internet connection.
2. Off-campus housing: [www.dsa.fju.edu.tw](http://www.dsa.fju.edu.tw).
3. Home-stay on weekends: Only available for students in the study tour programs.

### Location & Facilities

1. Location: 10 kilometers from Taipei City, very accessible by public transportation.
2. Facilities: Air-conditioned classrooms, AV rooms, study room, student lounge, and university facilities (language labs, libraries, computing and sport facilities, etc.).

Course Type	Period of Study	Start Date	Total Hours	Class Size	Tuition & Registration Fee (NTD)	Tuition & Registration Fee (USD)	Application Deadline
General Course + Cognate Class	12 weeks	02/03/2016	180 hours	General course: 4–7 students Cognate class: 8–21 students	NT \$28,000	~US \$875	15/01/2016
		01/06/2016					15/04/2016
		05/09/2016					15/07/2016
	11 weeks	12/2016	165 hours		NT \$25,750	~US \$805	15/10/2016
	Summer Sessions	4 weeks	04/07/2016		60 hours	General course: 4–7 students Cognate class: 8–21 students	NT \$9,900
3 weeks		01/08/2016	45 hours	NT \$7,650	~US \$239		15/06/2016
Study Tour Program		Flexible/custom-tailored/client-specific					

#### Note:

1. The academic year is divided into quarters (Fall quarter, Winter quarter, Spring quarter, Summer quarter).
2. Tuition rates are quoted in NT dollars and are subject to change without notice. An exchange rate of US \$1 to NT \$32 is used above. The actual rate may vary.
3. All full-time students are required to take 15 hours of class per week.





# Chung Yuan Christian University

Mandarin Learning Center | Taoyuan City

No. 200, Chung Pei Road, Chung Li District, Taoyuan City 32023, Taiwan (R.O.C.)  
Tel: +886-3-2651324  
Fax: +886-3-2651328  
Email: cmlcycu@cycu.edu.tw  
Website: mlc.cycu.edu.tw



## Student Eligibility & Age

Aged 13 or older

## Distinctive Features

### Practical Mandarin programs

6 levels are offered each term, from beginners level to advanced. All classes are conducted in Chinese, using immersion teaching.

### Summer/Winter Chinese Language and Cultural Immersion Program (tentative)

Comprising Chinese language class, Chinese culture course, and local tours on weekdays.

### Chinese teacher training curriculum

Chinese teaching theory & practical simulations, tentative training courses.

## Application

### Mandarin Learning Visa Overseas applicants

Apply 4 weeks before the new term starts

Applicants Within Taiwan Holding a Visitor Visa, Dependent Visa, Working Holiday Visa, or ARC valid for the period of the course

2 weeks before the term starts.

For more information about applications, please see: <http://mlc.cycu.edu.tw>

## Scholarships

1. Extend Semester Award
  2. Excellent Class Results Award
  3. Full Attendance Award
  4. Introduce Freshman Award
  5. Events Participation Award (First, second, third place)
  6. Results Progress Award
- \* Scholarships are offered with M.O.E (Ministry of Education) funding assistance.

## Accommodation

Information about off-campus apartments and dorms is available at the following link: <http://house.cycu.edu.tw/>

## Location & Facilities

CYCU campus is located in the center of the city. It's right next to the famous Chung Yuan night market, which is full of bustling atmosphere and energy. RT-Mart is also near the campus. Students can easily buy products for daily use in walking distance.

### Facilities:

General classrooms, multiple-function situational classrooms, cooking classrooms, lecture classrooms.

There are computer facilities, projector equipment, and an internet connection in every classroom.

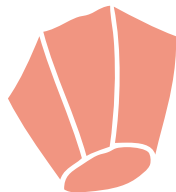
Course Type	Period of Study	Start Date	Total Hours	Class Size	Tuition & Registration Fee (NTD)	Tuition & Registration Fee (USD)	Application Deadline
Regular Class	3 months	03/03/2016	165 hours	6-10 people	NT \$27,400	~US \$856	04/02/2016
One-on-one Course	Customized duration	Customized	30 hours a term	1 person	NT \$15,750	~US \$492	At least 1 week before
Intensive Class	2-4 weeks	Summer, winter camp, or customized date	6.5 hours a day	15-30 people	NT \$25,000 - \$35,000	~US \$781-\$1,093	Negotiable



# Kainan University

Chinese Learning Center | Taoyuan County

Taoyuan Campus: No. 1 Kainan Road, Luzhu Township, Taoyuan County 33857, Taiwan (R.O.C.)  
Taipei campus: No. 6, Section 1 Jinan Road, Taipei, Taiwan (R.O.C.)  
Tel: +886-3-3412500 ext.4640  
+886-2-33224533 ext.18  
Fax: +886-3-2705542  
+886-2-23960071  
Email: mandarin@mail.knu.edu.tw  
haby615@mail.knu.edu.tw (Jane)  
Website: [www.knu.edu.tw/CLC/cht/index.html](http://www.knu.edu.tw/CLC/cht/index.html)



## Student Eligibility & Age

No limit

## Distinctive Features

The Chinese Learning Center was founded in 2009. CLC's goal is to develop a management system to support the Chinese education for global enterprises and language schools. CLC's students come from different cultures and language backgrounds and they share the common goal of learning to communicate in Chinese effectively. Many students have never learned Chinese before they enroll in the Mandarin Center. No matter what your motive for learning Chinese or what the level of your Chinese is, CLC will do all it can to help you make rapid progress.

## Application

Please contact the language center for more information.

## Scholarships

N/A

## Accommodation

N/A

## Location & Facilities

### Taoyuan Campus:

Our center is located on the campus of Kainan University, in Luchu near Taiwan Taoyuan International Airport. Many of the classrooms are furnished with audio and video equipment, including DVD players, projectors, and networked computers.

### Taipei campus:

Our center in Taipei is close to the Taipei and Shandao Temple MRT stations, famous night-markets, and shopping centers.

Course Type	Period of Study	Start Date	Total Hours	Class Size	Tuition & Registration Fee (NTD)	Tuition & Registration Fee (USD)	Application Deadline
Please contact the language center for course information.							



# Lunghwa University of Science and Technology

Chinese Language Center | Taoyuan County

No. 300, Section 1 Wanshou Road, Guishan District, Taoyuan County 33306, Taiwan (R.O.C.)  
Tel: +886-2-82093211ext.2500  
Fax: +886-2-82094650  
Email: wenjun@gm.lhu.edu.tw  
Website: www.lhu.edu.tw/m/ctc/index.html



### Student Eligibility & Age

Please contact the center for detailed information.

### Distinctive Features

- 1. Expert teachers ensure you a successful educational experience.
- 2. Small classes offer students more interactions with teachers and classmates.
- 3. Lunghwa is in the vicinity of the capital city Taipei, with convenient public transportation that provides students with opportunities for more multicultural stimulation.
- 4. Lunghwa offers top quality air-conditioned dormitories with free Wi-Fi service.

### Application

Please fill in our Application Form and send it and the necessary documents to us at the address above.  
Download the Application Form from here:

[http://www.ctc.lhu.edu.tw/ctc\\_english/Application/Application.htm](http://www.ctc.lhu.edu.tw/ctc_english/Application/Application.htm)  
Our e-mail: wenjun@gm.lhu.edu.tw

### Scholarships

N/A

### Location & Facilities

Lunghwa is close to MRT Huilong station, and over 10 bus lines service the stop in front of the campus. It takes just 30 minutes to reach Taipei Main station and about 40 minutes to reach Taoyuan International Airport.

Course Type	Period of Study	Start Date	Total Hours	Class Size	Tuition & Registration Fee (NTD)	Tuition & Registration Fee (USD)	Application Deadline
Intensive Beginning Level	22/09/2016–25/12/2016	22/09/2016	210 hours	17 people		Each course costs US \$1,300	
Intermediate Level	22/09/2016–25/12/2016	22/09/2016	84 hours	15 people		Each course costs US \$1,300	



# National Central University

Language Center | Taoyuan City

No. 300, Zhongda Road, Zhongli District, Taoyuan City 32001, Taiwan (R.O.C.)  
Tel: +886-3-4227151  
Fax: +886-3-4255384  
Email: ncu3802@ncu.edu.tw  
Website: www.lc.ncu.edu.tw/main/clp/index.php



### Student Eligibility & Age

High school graduation

### Distinctive Features

The Chinese language program offers credit courses and non-credit courses (5 day/week external classes). The courses can be classified into four categories:  
1. Basic Chinese courses,  
2. Practical Chinese courses,  
3. Culturally related Chinese courses, and  
4. Miscellaneous Chinese courses (e.g. short stories).  
The courses are all designed to help students develop their Chinese spoken fluency and get acquainted with Chinese culture and society.  
Our center also provides 24–28 credits of training courses to become a qualified Chinese language teacher.

### Scholarships

#### On-campus Scholarships

Tuition Rebate (applicable to students in group classes)  
Chinese Language Students of the Language Center who take group classes in two semesters (the completed one and the next one) are entitled to a 10% reduction in tuition if they meet the criteria listed below. Scholarship awardees or students already entitled to some other discount are not eligible.

- 1. Have completed the previous semester at the Language Center and are enrolled for the next 3 months;
- 2. Were absent from class for a total of less than 5 hours during the previous semester;
- 3. Have maintained a grade of 90% or above during the previous semester.

### Accommodation

#### Off-campus Housing

For more details, please see Off-campus Housing.  
[http://www.ncu.edu.tw/campus/student\\_housing](http://www.ncu.edu.tw/campus/student_housing)

### Location & Facilities

In addition to our extraordinary teaching staff, the center also provides comprehensive audio-video equipment for teachers to use in class and to assist students in their studies after class. The Language Center currently has two language labs and five multimedia classrooms open to all students (foreign and domestic).

Course Type	Period of Study	Start Date	Total Hours	Class Size	Tuition & Registration Fee (NTD)	Tuition & Registration Fee (USD)	Application Deadline
Regular Class	3 months	14/03/2016	180 hours	~ 10 people	NT \$28,000	~US \$866	14/03/2016
			120 hours		NT \$24,000	~US \$800	
		20/06/2016	180 hours		NT \$28,000	~US \$866	20/06/2016
			120 hours		NT \$24,000	~US \$800	
		14/09/2016	180 hours		NT \$28,000	~US \$866	14/09/2016
			120 hours		NT \$24,000	~US \$800	
		21/12/2016	180 hours		NT \$28,000	~US \$866	21/12/2016
			120 hours		NT \$24,000	~US \$800	





# Taoyuan Innovation Institute of Technology

Chinese Language Section, Language Center | Taoyuan City

No. 414, Section 3 Jhongshan E. Road, Zhongli District, Taoyuan City 32091, Taiwan (R.O.C.)  
Tel: +886-3-4361070 ext.7602, 7619  
Fax: +886-3-4650401  
Email: [cls@tiit.edu.tw](mailto:cls@tiit.edu.tw)  
Website: [web.tiit.edu.tw/language/center/chinese/en\\_about.htm](http://web.tiit.edu.tw/language/center/chinese/en_about.htm)



# Chung Hua University

Mandarin Training Center | Hsinchu City

No. 707, Section 2 Wu Fu Road, Hsinchu City 30012, Taiwan (R.O.C.)  
Tel: +886-3-5186175  
Fax: +886-3-5186174  
Email: [international@chu.edu.tw](mailto:international@chu.edu.tw)  
Website: [international.chu.edu.tw/1page5/super\\_pages.php?ID=1page502](http://international.chu.edu.tw/1page5/super_pages.php?ID=1page502)



### Student Eligibility & Age

Chinese language classes are open to people who:  
1. have a high school diploma (with an average grade of 6.0+ or GPA 3.0+), or  
2. have passed TOCFL level 1+, or TOEIC 300+, or  
3. have learned Mandarin for at least one year in high school or college, with an average grade of 6.0+

### Distinctive Features

All faculty members at the CLS are highly trained professionals with years of experience in teaching Mandarin as a second language.  
Apart from its language courses, CLS also offers a variety of cultural workshops, such as cultural experience activities, Chinese calligraphy, origami, and outdoor activities.

### Application

Applicants must mail their application and all the required materials to the Chinese Language Section, at the address above. The application materials must be in both Chinese and in English.

### Scholarships

N/A

### Accommodation

TIIT has a dormitory with rooms for three people and rooms for five people. Dormitory facilities include washing machines, reading rooms, and a lounge. In addition, each dormitory has a computer monitor system to protect students' safety.

### Location & Facilities

Students can enjoy a colorful campus life here at TIIT. TIIT is located in Zhongli District in Taoyuan City. TIIT provides students with a comfortable dormitory, and there is a cafeteria, a convenience store, an indoor gymnasium, outdoor athletic facilities, a café, and a library. The campus is beautiful.

### Distinctive Features

Chung Hua University (CHU) is a leading private sector university that provides both students and faculty with a unique learning and research environment.  
The university is in the city of Hsinchu, about 72 kilometers south of Taipei, and 15 minutes by car from downtown Hsinchu. The campus covers more than 20 hectares located on the Hsinchu plateau and surrounded by naturally beautiful hills.

### Application

Please download and complete the application form at the following link ([http://international.chu.edu.tw/1page5/super\\_pages.php?ID=1page502&Sn=100](http://international.chu.edu.tw/1page5/super_pages.php?ID=1page502&Sn=100)), and email it to [international@chu.edu.tw](mailto:international@chu.edu.tw) along with all the other documents required.

### Scholarships

Title: Chung Hua University Pre-session Chinese Courses Scholarship

This is specially designed for students who intend to enroll as a CHU degree student after learning Mandarin for at least one semester. This scholarship award is for the same amount as the tuition fee for a one-semester Mandarin course.

### Accommodation

All international students are eligible to apply for on-campus dormitory accommodation sharing a room with Taiwanese students. The cost for each student is from NT \$10,600 to NT \$15,600 (~US \$350 to ~US \$520) per semester. Accommodation is also available for the summer and winter terms. Please contact us as early as possible to check the availability of accommodation.

### Location & Facilities

Chung Hua University has high-tech computer labs and executive classrooms, CHU students have some of the best and newest technology at their fingertips. Our modern facilities include the multi-media classrooms, computer center with free internet access, library, arts center, counseling center, health center, housing service, international student office, and two cafeterias.

Course Type	Period of Study	Start Date	Total Hours	Class Size	Tuition & Registration Fee (NTD)	Tuition & Registration Fee (USD)	Application Deadline
Regular Class (Practical Mandarin Program)	3 months	15/02/2016	165 hours	6-10 people	NT \$28,800	~US \$900	Overseas: six weeks before term starts Local: two weeks before term starts
		16/05/2016					
		08/08/2016					
		19/10/2016					
One-on-one Course (On campus)	Depends on your schedule		24-180 hours	1 person	NT \$12,800- \$86,400	~US \$400- ~US \$2,700	Two weeks before the starting date of each term

Course Type	Period of Study	Start Date	Total Hours	Class Size	Tuition & Registration Fee (NTD)	Tuition & Registration Fee (USD)	Application Deadline
Introductory Chinese	18 weeks	17/02/2016	255 hours	6-10 people	NT \$43,500	~US \$1,450	16/02/2016
Elementary Chinese	18 weeks	17/02/2016	255 hours	6-10 people	NT \$43,500	~US \$1,450	16/02/2016



## National Chiao Tung University

Chinese Language Division, LTRC | Hsinchu City

No. 1001 University Road, East District, Hsinchu City 30010, Taiwan (R.O.C.)

Tel: +886-3-5131231

Fax: +886-3-5711437

Email: [mandarin@cc.nctu.edu.tw](mailto:mandarin@cc.nctu.edu.tw)

Website: [mandarin.nctu.edu.tw/](http://mandarin.nctu.edu.tw/)



### Student Eligibility & Age

Foreigners who have at least a high school diploma, wish to study Chinese and meet the course registration requirements.

### Distinctive Features

Chinese Language Division, LTRC of National Chiao Tung University (NCTU) was founded in 2005 to offer Mandarin courses to foreigners staying in the Hsinchu area. Our language students are generally NCTU international students, foreign professionals from companies at Hsinchu Science Park, non-Chinese English teachers, among others. As well as our Chinese courses, we also offer a one-on-one tutorial service, and activities such as a Chinese Language Circle, a Chinese Song Contest, a Chinese Recitation Contest, and cultural trips.

### Application

Applying via email, please email: [mandarin@cc.nctu.edu.tw](mailto:mandarin@cc.nctu.edu.tw)

### Scholarships

N/A

### Accommodation

Information about off-campus housing is available on the NCTU website and the bulletin boards near the campus.

### Location & Facilities

The center is located near Hsinchu Science-based Park. We provide an audio-visual classroom that can be used for independent learning and a library with a large collection of books. We have also established an online forum and interactive learning web and this extends classes outside the classrooms and beyond class hours.



## Fo Guang University

Chinese Language Instruction Center | Yilan City

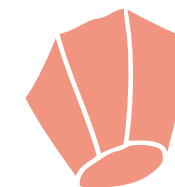
No. 257 Chung Shen Road, Yilan City 26044, Taiwan (R.O.C.)

Tel: +886-3-9313343 ext.103

Fax: +886-3-9315904

Email: [cllc@mail.fgu.edu.tw](mailto:cllc@mail.fgu.edu.tw)

Website: [www.fgu.edu.tw/~chinlang/cllc.htm](http://www.fgu.edu.tw/~chinlang/cllc.htm)



### Student Eligibility & Age

Age 18–80

### Distinctive Features

Small Mandarin classes are emphasized. All aspects of the learning environment have been considered in building a new style seat of learning in Taiwan where the spirit of humanities-based study and education can blossom and flourish. We are dedicated to serving the needs of non-native speakers who are seeking an integrated education in the Chinese language and culture, with the requisite training and guidance to speak effectively. We also offer a Flexible Hours Program which is designed for students who require flexible learning arrangements.

### Application

1. Apply in person
2. Post your application

### Scholarships

N/A

### Accommodation

1. Yilan Dormitory photos: [https://www.facebook.com/FGUCLIC/media\\_set?set=a.755234577883845.1073741932.100001919293049&type=3](https://www.facebook.com/FGUCLIC/media_set?set=a.755234577883845.1073741932.100001919293049&type=3)  
4 people sharing a room will be charged NT \$8,500;  
2 people sharing a room will be charged NT \$10,512 for each 6-month period. There is an additional NT \$2,000 deposit charge.
2. Students can rent accommodation in Yilan. They can get helpful information about this from Fo Guang staff. Local accommodation will cost around NT \$4,000 to NT \$8,000 per month.

### Location & Facilities

The Chinese Language Instruction Center is conveniently located in downtown Yilan. There are museums and cultural settings nearby. Interesting activities are held year-round, for example Traditional Opera Festivals and an International Boat Race. Facilities include a comprehensive reference library, language lab, well-equipped computer room with internet connection, exercise room, individual lockers, coffee makers, TV, and refrigerator.

Course Type	Period of Study	Start Date	Total Hours	Class Size	Tuition & Registration Fee (NTD)	Tuition & Registration Fee (USD)	Application Deadline
Regular Class	07/03/2016–27/05/2016	07/03/2016	180 hours	4–6 people	NT \$38,000	–US \$1,188	<b>Overseas applicants:</b> 2 months before the starting date. <b>Local applicants:</b> 2 weeks before the starting date.
	06/06/2016–26/08/2016	06/06/2016					
	05/09/2016–25/11/2016	05/09/2016					
	05/12/2016–24/02/2017	05/12/2016					
Flexible Program	By request	By request	By request	1–6 people	Based on total hours	–US \$1,100	Please contact us

\* Fo Guang offers 4 Regular Classes each year: Spring (March to May), Summer (June to August), Autumn (September to November), and Winter (December to February).

\* One-on-One: NT \$550 (–US \$18) per hour. Fo Guang can adjust the course to meet the student's requirements.





# National United University

Chinese Language Center | Miaoli City

No. 2 Lianda, Nanshi Village, Miaoli City 360, Taiwan (R.O.C.)  
 Tel: +886-37-382146  
 Fax: +886-37-382148  
 Email: CLC@nuu.edu.tw  
 Website: nuuclc.weebly.com/



# Feng Chia University

Chinese Language Center | Taichung City

100 Wen-hua Road, Seatwen, Taichung City 40724, Taiwan (R.O.C.)  
 Tel: +886-4-24517250 ext.5875  
 Fax: +886-4-24510243  
 Email: clc@fcu.edu.tw  
 Website: www.clc.fcu.edu.tw



## Student Eligibility & Age

No limit. Students under 18 years old require a guardian or friend to assist them during their stay in Taiwan.

## Distinctive Features

The Chinese Language Center (CLC) was established in 1997 in the college of Humanities and Social Sciences. We provide Mandarin courses to students who are interested in and committed to learning the Chinese language and about Chinese culture. Each term lasts 10–11 weeks. The center engages in the business of language teaching with the hope of helping spread knowledge and appreciation of the beauty of Chinese and Taiwanese cultures and to ultimately enhance trans-national understanding in our world.

## Application

Download and fill out the application form and submit your application by mail or e-mail it to us. More information can be found here: <http://nuuclc.weebly.com/application-information.html>

## Scholarships

N/A

## Accommodation

NUU dormitory rooms are available for CLC students. Accommodation fee: ~US \$14/week/person. This does not include broadband internet or air-conditioning. These are both on a user-pay basis. Please feel free to contact CLC personnel for assistance if you need help to apply for internet access or air-conditioning.

## Location & Facilities

NUU is located in Miaoli County, a mountain town with the beautiful sceneries and ecological attractions in the central northern part of Taiwan. It takes about 1.5 hours to drive there from Taoyuan international Airport. We have two campuses, the CLC is located at the new Bajia campus. Students at CLC can apply for a Mandarin Student card which allows them to use the facilities at NUU, such as the library, gym, swimming pool, and so on.

## Student Eligibility & Age

Regular course: 18 or older with a high school diploma  
 Summer program: 16 or older

## Distinctive Features

1. 40 years devoted to language learning
2. Taichung's mild climate year round
3. Top-of-the-line multi-media facilities
4. Prime location in Taichung with modern and traditional attractions
5. Wide range of electives and extracurricular activities to meet everyone's needs and interests
6. Friendly and family-like atmosphere at the office
7. Convenient and low cost of living
8. World-class sports complex and library

## Application

Online application at <http://www.clc.fcu.edu.tw/?id=11>

## Scholarships

CLC scholarship:  
 The scholarship is for students who have studied with us at least one term and whose academic performance stands out compared with the other students from the Center.

## Accommodation

We have a long-standing cooperative arrangement with the residence halls near the university to provide ensuite bedrooms. Please contact us in advance if you want to make use of these housing facilities.

## Location & Facilities

Our prime location in Taichung allows you to experience true Taiwanese culture. For example, right outside the front gate is the famous Feng Chia Night Market. Taichung is a city with a unique blend of traditional and modern: there's always a place to explore that's close, convenient, and cheap.

Course Type	Period of Study	Start Date	Total Hours	Class Size	Tuition & Registration Fee (NTD)	Tuition & Registration Fee (USD)	Application Deadline
Group Class Spring/Fall	11 weeks	21/03/2016	165 hours	5–15 students	NT \$27,225	–US \$850	One month before class starts
		19/09/2016					
Group Class Summer/Winter	10 weeks	27/06/2016	150 hours	5–15 students	NT \$24,750	–US \$775	One month before class starts
		19/12/2016					
Intensive Chinese Class	2–3 weeks	Flexible Dates	Mandarin class + Culture class	Depends on the program			One month before class starts

Course Type	Period of Study	Start Date	Total Hours	Class Size	Tuition & Registration Fee (NTD)	Tuition & Registration Fee (USD)	Application Deadline
Summer Program	2 weeks	04/07/2016	38 hours	15 people	NT \$29,990	~US \$938	31/03/2016
Regular Program	12 weeks	05/03/2016	180 hours	Average 10	NT \$23,500	~US \$735	Overseas Applicants: 6 weeks before the term starts Local Applicants: 1 week before the term starts
		05/06/2016					
		05/09/2016					
		05/12/2016					



## National Chung Hsing University

Chinese Program | Taichung City

250 Kuo Kuang Road, Taichung City 40227, Taiwan (R.O.C.)

Tel: +886-4-22840326

Fax: +886-4-22859956

Email: [chinesenchu@gmail.com](mailto:chinesenchu@gmail.com)

Website: [cp.nchu.edu.tw](http://cp.nchu.edu.tw)



## National Taichung University of Education

Chinese Language Center | Taichung City

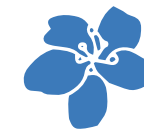
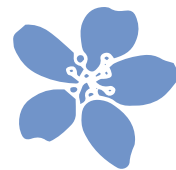
No. 140, Minsheng Road, West District, Taichung City 40306, Taiwan (R.O.C.)

Tel: +886-4-22183283

Fax: +886-4-22183450

Email: [clc@mail.ntcu.edu.tw](mailto:clc@mail.ntcu.edu.tw)

Website: [clc.ntcu.edu.tw/index\\_en.php](http://clc.ntcu.edu.tw/index_en.php)



### Student Eligibility & Age

Aged 18 or older, with at least a high school diploma.

### Distinctive Features

The NCHU Chinese Program is the best choice for students who want to learn Chinese in Taiwan. The advantages are as follows:

1. Learning in the best national university in Taichung
2. Highly experienced and professional trained instructors
3. Small class sizes
4. Convenient transportation and high-quality living
5. Friendly people and a beautiful campus
6. Inexpensive daily costs

### Application

Students who want to apply for our program can submit an application form and the other necessary documents by email, by mail, or in person.

### Scholarships

N/A

### Accommodation

NCHU Chinese Program students are not eligible to live in the campus dorm, so they have to find off-campus accommodation. We provide a housing website for students, and we will find student helpers to assist them as well, so it will be easy for students to find accommodation close to our university.

The university's housing website: <http://www.osa.nchu.edu.tw/osa/dorm/sys/modules/re/notice.php>

### Location & Facilities

NCHU Chinese Program is located in the south area of Taichung City. Standard multi-media equipment such as internet, computer, projector and screen are installed in each lab and each classroom to facilitate and help you enjoy learning Chinese.

### Student Eligibility & Age

Open to students aged at least 18 years who have a high school diploma or its equivalent. Applicants under 18 who have a high school diploma or its equivalent are also accepted.

### Distinctive Features

At the CLC at NTCU the classes are customized to meet the needs of students. They are conducted in small groups with effective, proven methods, allowing students to acquire practical listening, speaking, reading and writing skills. The teaching faculty and staff members are experienced and qualified.

### Application

<http://clc.ntcu.edu.tw/english.php?sn=46>

### Scholarships

N/A

### Accommodation

CLC offers both suite accommodation and shared room accommodation at the guest hostel of NTCU. The fee ranges from NT \$6,825-\$8,925 per month, depending on the type of room. <http://clc.ntcu.edu.tw/english.php?sn=37>

### Location & Facilities

The CLC at NTCU is located in central Taiwan, in the downtown area of Taichung City and it is surrounded by the most convenient living area. NTCU provides a library and physical recreation facilities for students. <http://clc.ntcu.edu.tw/english.php?sn=8>

Course Type	Period of Study	Start Date	Total Hours	Class Size	Tuition & Registration Fee (NTD)	Tuition & Registration Fee (USD)	Application Deadline
Intensive Class - Spring Term	3 months	01/03/2016	171 hours	6-12 people	NT \$24,000	~US \$800	03/02/2016
Intensive Class - Summer Term	3 months	30/05/2016	174 hours	6-12 people	NT \$24,000	~US \$800	06/05/2016
Intensive Class - Autumn Term	3 months	29/08/2016	171 hours	6-12 people	NT \$24,000	~US \$800	05/08/2016
Intensive Class - Winter Term	3 months	28/11/2016	165 hours	6-12 people	NT \$24,000	~US \$800	04/11/2016

Course Type	Period of Study	Start Date	Total Hours	Class Size	Tuition & Registration Fee (NTD)	Tuition & Registration Fee (USD)	Application Deadline
Quarter Program Spring Term	12 weeks	22/02/2016	180 hours	5-12 people	NT \$24,000	~US \$800	31/01/2016
Quarter Program Summer Term	12 weeks	30/05/2016	180 hours	5-12 people	NT \$24,000	~US \$800	30/04/2016
Quarter Program Fall Term	12 weeks	29/08/2016	180 hours	5-12 people	NT \$24,000	~US \$800	31/07/2016
Quarter Program Winter Term	10 weeks	28/11/2016	180 hours	5-12 people	NT \$20,000	~US \$670	31/10/2016
1-on-1 Tutorial Program	30 hours	At any time	30 hours	1 person	NT \$13,600	~US \$455	Flexible Suitable for independent travelers or people requiring intensive training
Short-term Chinese Program	30 hours	At any time	30 hours	2-5 people	NT \$8,600	~US \$290	Flexible Suitable for 2 or more people





## Providence University

Chinese Language Education Center | Taichung City

200, Section 7 Taiwan Boulevard, Shalu District, Taichung City 43301, Taiwan (R.O.C.)

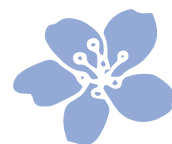
Tel: +886-4-26645009

Fax: +886-4-26330340

Email: Yhchang3@pu.edu.tw

clhuang@pu.edu.tw

Website: clec.pu.edu.tw



### Student Eligibility & Age

Aged 15 or older

### Distinctive Features

1. The Chinese Language Education Center (CLEC) of Providence University (PU) was founded in 1996.
2. The CLEC instructors are all native Mandarin speakers and they speak English and other foreign languages.
3. More than 6,000 students from 96 different countries have learned Chinese Mandarin at our CLEC.

### Application

All students have to fill out the application form. Please download one from our website: <http://clcc.pu.edu.tw>  
Online application website: [http://alcat.pu.edu.tw/oia\\_incoming/index.php](http://alcat.pu.edu.tw/oia_incoming/index.php)

### Scholarships

CLEC Scholarship:

Approximately 10–20 students are awarded a scholarship each year by CLEC.

The total value of the award is from NT \$8,000 to NT \$10,000 for one term.

### Accommodation

We provide dormitory accommodation for all the foreign students. Rooms are shared by two, three, or four people. The room rates depend on the number of persons sharing the room. They are about NT \$7,200 to NT \$9,000. All the rooms are fully air-conditioned. If students who would like to stay short term with a host family that can also be arranged.

### Location & Facilities

CLEC is located at the west of Taichung City, Central Taiwan, and it boasts the best weather conditions on the island. Students can enjoy state-of-the-art facilities, such as a brand new gym, an elegant library, swimming pool, computer center, among others. CLEC aims to provide every student with the best opportunity to learn Mandarin and various aspects of Chinese culture through practical experience.

Course Type	Period of Study	Start Date	Total Hours	Class Size	Tuition & Registration Fee (NTD)	Tuition & Registration Fee (USD)	Application Deadline
General Course	01/03/2016–18/05/2016	01/03/2016	165 hours	6–10 people	NT \$24,000	~US \$800	31/01/2016
	01/06/2016–23/08/2016	01/06/2016					30/04/2016
	01/09/2016–17/11/2016	01/09/2016					31/07/2016
	28/11/2016–21/02/2017	28/11/2016					31/10/2016
Intensive Summer Courses	01/07/2016–23/08/2016	01/07/2016	108 hours	6–10 people	NT \$18,000	~US \$600	31/05/2016
Special Young Learner Courses	27/06/2016–05/08/2016	27/06/2016	90 hours	10–15 people	NT \$54,600	~US \$1,820	30/04/2016
Chinese Painting, Calligraphy, Rice Dough Figure, etc.	12/09/2016–17/11/2016	12/09/2016	16 hours	10–20 people	NT \$3,300	~US \$110	31/08/2016



## Tunghai University

Chinese Language Center | Taichung City

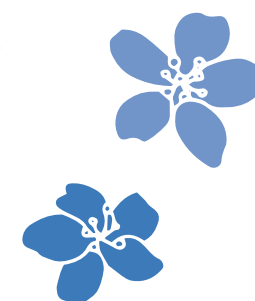
Rm. 103, Language Building, No. 1727, Section 4 Taiwan Boulevard, Xitun District, Taichung City 40704, Taiwan (R.O.C.)

Tel: +886-4-23590259

Fax: +886-4-23594408

Email: clc@thu.edu.tw

Website: clc.thu.edu.tw



### Student Eligibility & Age

18 years old and above, or with a high school diploma.

### Distinctive Features

1. This is a long-standing and well-known institute for teaching Mandarin Chinese to foreigners in Taiwan.
2. Small class sizes, with course content tailored to the individual.
3. Excellent extra-curricular tutors and guidance programs, helping students break through the bottleneck between the classroom and real life.
4. Guidance is available to students intending to take the TOCFL Chinese proficiency test.

### Application

People who are overseas can apply online [http://clc.thu.edu.tw/admiss/super\\_pages.php?ID=admiss1](http://clc.thu.edu.tw/admiss/super_pages.php?ID=admiss1), and send us the necessary documents.

We also welcome people in Taiwan who want to learn Chinese. They can come to our office to register and also hand in all the necessary documents in person.

### Scholarships

The CLC offers the "Chinese Language Center Scholastic Achievement" award.

Applicants are required to take a written test and an oral test. Award winners are granted a one-off scholarship of from NT \$20,000 up to NT \$30,000.

### Accommodation

There is limited on-campus accommodation available. The CLC students may apply for on-campus residence if there are any rooms still available after the application period for THU degree students ends.

Many CLC students opt for off-campus accommodation. The CLC provides assistance to help students look for housing near the THU campus, and students can expect to find a suitable place to live quite quickly.

### Location & Facilities

The CLC is located in the Language (LAN) Building on the Tunghai campus. There is a post office, bank, bookstore, café, restaurant, and dairy factory, as well as a number of cafeterias and convenience stores on campus. Students can use various school facilities such as the library, swimming pool, sport courts, gym, and computer center.

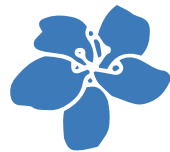
Course Type	Period of Study	Start Date	Total Hours	Class Size	Tuition & Registration Fee (NTD)	Tuition & Registration Fee (USD)	Application Deadline
Regular Class (Introductory / Beginning / Intermediate / Advanced Chinese)	22/02/2016–10/06/2016	22/02/2016	240 hours	5–7 people	NT \$36,000	~US \$1,200	31/12/2015
	11/07/2016–02/09/2016	11/07/2016	120 hours		NT \$18,000	~US \$600	31/05/2016
	26/09/2016–13/01/2017	26/09/2016	240 hours		NT \$36,000	~US \$1,200	31/07/2016
Private Class	According to student's schedule	At any time	According to student's schedule	1–4 people	NT \$230–NT \$450 per unit	According to student's class schedule	Two weeks before the class starts
Short-term Program	2–4 weeks	According to group's schedule				Depends on the program	



# Chienkuo Technology University

Language Center, Chinese Language Section | Changhua City

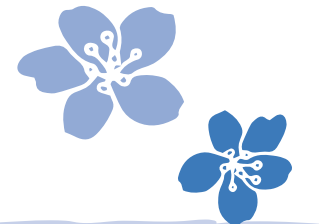
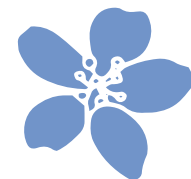
No. 1 Jie Shou North Road, Changhua City 50094, Taiwan (R.O.C.)  
Tel: +886-4-7111111 ext.4003  
Fax: +886-4-7114631  
Email: lc@ctu.edu.tw  
Website: enlc.ctu.edu.tw/bin/home.php



# National Changhua University of Education

Language Center | Changhua City

No. 108 Xueshi Street, Changhua City 500, Taiwan (R.O.C.)  
Tel: +886-4-7232105  
Fax: +886-4-7211226  
Email: lc@cc2.ncue.edu.tw  
nancy0714@cc.ncue.edu.tw  
Website: lc.ncue.edu.tw



## Student Eligibility & Age

Aged at least 16

## Distinctive Features

1. We encourage our students to take part in standardized Chinese proficiency tests – HSK or TOCFL.
2. CTU is located in a historical city in central Taiwan. The city has profound historical sites and monuments.
3. As well as learning the Chinese language, you will enjoy many cultural activities and learn more about Taiwanese culture.

## Application

Please fill in the application form and submit it with all the required documents. These are listed at the end of the application form.

## Scholarships

We offer a tuition discount of 10%~15% to eligible students.

## Accommodation

Two student dormitories offer rooms for 2, 4 or 6 roommates to share. Single rooms can be rented near the campus.

## Location & Facilities

CTU is located in Changhua City, a very historical district in Taiwan. The city is about 22 kilometers south of Taichung City, the third largest city in Taiwan and the largest city in central Taiwan.

We have a wide variety of digital courseware for learning Chinese: IQChinese, My Chinese Tutor, Chinese Character Learning Courseware, and CTU Self-Developed Chinese Courseware.

## Student Eligibility & Age

Be aged 18 or older, or have at least a high school diploma, or its equivalent.

## Distinctive Features

1. Excellent and friendly learning environment
2. Various language and culture courses
3. Perfect equipment
4. All lectures are given in small classes

## Application

Please lodge your application by e-mail or by regular mail to the address above.  
<http://lc.ncue.edu.tw/front/bin/ptdetail.phtml?Part=2014CP&Rcg=2>

## Scholarships

N/A

## Accommodation

Dormitory Housing is provided for international students in order to ensure the safety. Boys'and girls' dorms are in separate floors with double or four-bed rooms. Students' dorm of NCUE. <http://student.ncue.edu.tw/files/11-1017-1398.php>

## Location & Facilities

We are located in **Changhua City**. We have two classrooms and two language labs that are equipped with single gun projection equipment, and a teaching table (including the host computer, LCD screens, audio amplifier, and DVD player).

Course Type	Period of Study	Start Date	Total Hours	Class Size	Tuition & Registration Fee (NTD)	Tuition & Registration Fee (USD)	Application Deadline
Spring or Fall Class	18 weeks	25/02/2016 or 15/09/2016	270 hours	4-12 students	NT \$40,500	~US \$1,265	One month before the starting date of each term
Summer Class	8 weeks	05/07/2016	120 hours	4-12 students	NT \$18,000	~US \$563	One month before the starting date of each term
Winter Class	4 weeks	05/01/2016	60 hours	4-12 students	NT \$9,000	~US \$281	One month before the starting date of each term

Course Type	Period of Study	Start Date	Total Hours	Class Size	Tuition & Registration Fee (NTD)	Tuition & Registration Fee (USD)	Application Deadline
Intensive Class (Spring Session)	12 weeks	07/03/2016	180 hours	5-10 people	Registration NT \$1,000 Tuition NT \$30,000	Registration ~US \$31 Tuition ~US \$925	One month before the starting date of each term
Intensive Class (Summer Session)	12 weeks	13/06/2016	180 hours	5-10 people	Registration NT \$1,000 Tuition NT \$30,000	Registration ~US \$31 Tuition ~US \$925	One month before the starting date of each term
Intensive Class (Autumn Session)	12 weeks	26/09/2016	180 hours	5-10 people	Registration NT \$1,000 Tuition NT \$30,000	Registration ~US \$31 Tuition ~US \$925	One month before the starting date of each term
Intensive Class (Winter Session)	12 weeks	26/12/2016	180 hours	5-10 people	Registration NT \$1,000 Tuition NT \$30,000	Registration ~US \$31 Tuition ~US \$925	One month before the starting date of each term
Private Class	By demands	At any time	At least 30 hours	By demands	NT \$200-NT \$350 per Unit	~US \$8--~US \$10 per Unit	By demands





## National Chiayi University

Language Center | Chiayi City

580 Xinmin Road, Chiayi City 60054, Taiwan (R.O.C.)

Tel: +886-5-2732981

+886-5-2732983

Fax: +886-5-2844916

Email: cslncyu@mail.ncyu.edu.tw

Website: 140.130.204.81



### Student Eligibility & Age

Foreigners aged 16 or older, or with a high school diploma.

### Distinctive Features

The CSL program at NCYU is different from a traditional classroom course model. We offer you a great opportunity to discover the local Taiwanese people and culture.

Features of the program:

1. No minimum Mandarin ability required
2. Small classes (3–8 people) and individual (one-on-one) classes
3. Cultural course package with a field trip included
4. Qualified and experienced native Taiwanese teachers
5. Great emphasis on interaction in class
6. Reasonable living expenses

### Application

Please download the application form from our website, fill in the form, and send it back to us via email.

### Scholarships

N/A

### Accommodation

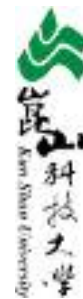
We don't provide dormitory accommodation for students, but we provide all the pertinent information to help them find suitable housing accommodation.

### Location & Facilities

**Location:**  
The Division of CSL is located in Xinmin Campus (one of four campuses at NCYU) in the downtown area of Chiayi City.

**Facilities:**  
Our learning center is equipped with high technology learning facilities, including: a multi-media classroom, computer systems with internet access, and CD-ROM learning kits. All these facilities are available to the students to use free of charge.

Course Type	Period of Study	Start Date	Total Hours	Class Size	Tuition & Registration Fee (NTD)	Tuition & Registration Fee (USD)	Application Deadline
Intensive Class	03/2016–05/2016	03/2016	180 hours	3–8 people	NT \$32,400	~US \$1,013	20/02/2016
	06/2016–08/2016	06/2016					20/05/2016
	09/2016–11/2016	09/2016					20/07/2016
	12/2016–02/2017	12/2016					20/11/2016
Regular	03/2016–05/2016	03/2016	72 hours	3–8 people	NT \$14,400	~US \$450	20/02/2016
	06/2016–08/2016	06/2016					20/05/2016
	09/2016–11/2016	09/2016					20/07/2016
	12/2016–02/2017	12/2016					20/11/2016
Individual	Flexible	Flexible	Flexible	1 person	Flexible	Flexible	As above
Summer Intensive	06/2016–08/2016	06/2016	165 hours	6–10 people	NT \$20,000	~US \$625	31/05/2016



## Kun Shan University

Chinese Language Center | Tainan City

No. 195 Kunda Road, Yongkang District, Tainan City 71070, Taiwan (R.O.C.)

Tel: +886-6-2050006

Fax: +886-6-2050006

Email: lcc@mail.ksu.edu.tw

Website: www.ksu.edu.tw/eng/unit/D/T/NC/MLC/



### Student Eligibility & Age

1. Regular courses: Be aged at least 18 or have a high school diploma
2. Short-term programs: Be aged at least 7 & have a foreign passport

### Distinctive Features

1. CLC has two important missions: to help foreign students to acquire TOCFL certificates, and to train Chinese teachers with Taiwanese nationality to acquire TCSL certificates.
2. The center has enthusiastic tutors who offer students free one-on-one guidance and help.
3. CLC pays close attention to the individual needs of foreign students and provides a professional Chinese course design which puts special emphasis on Chinese daily conversation and creative activities.

### Application

The website for application information is <http://www.ksu.edu.tw/eng/unit/D/T/NC/MLC/>. Please send the completed application form to us by email.

### Scholarships

KSU-CLC is dedicated to helping foreign students apply for the following scholarships:

1. KSU Board Chairman Scholarship
2. KSU President Scholarship

### Accommodation

KSU offers different types of student dormitory: with ensuite, shared rooms, and different levels of room. KSU-CLC helps students apply for the type of room they would like. <http://www.ksu.edu.tw/eng/unit/D/A/SA/CLS/pageDetail/8496/> North Dormitory 7th and 8th floors are generally reserved for international students. The rooms are double ensuite style, and the facilities include a kitchenette, dining area, hot & cold drinking water machine, and refrigerator.

### Location & Facilities

1. KSU is located in the northeastern area of Tainan city on a beautiful, well-equipped and spacious campus.
2. KSU campus is 20 minutes from the HSR (High Speed Railway) station, and 15 minutes from Tainan Railway Station by City Bus No. 2
3. The Chinese Language Center has a multi-media language laboratory: an air-conditioned classroom with one pc for each student, with various Chinese-learning software installed that foreign students can use to practice.

Course Type	Period of Study	Start Date	Total Hours	Class Size	Tuition & Registration Fee (NTD)	Tuition & Registration Fee (USD)	Application Deadline
Spring Session	16/02/2016–10/05/2016	16/02/2016	180 hours	4–10 People	NT \$27,000	~US \$844	18/01/2016
Summer Session	07/06/2016–16/08/2016	07/06/2016	150 hours	4–10 People	NT \$22,500	~US \$703	09/05/2016
Autumn Session	19/09/2016–12/12/2016	19/09/2016	180 hours	4–10 People	NT \$27,000	~US \$844	01/09/2016
Winter Session	26/12/2016–23/01/2017	26/12/2016	60 hours	4–10 People	NT \$9,000	~US \$281	28/11/2016
Summer Intensive Session	03/08/2016–28/08/2016	03/08/2016	40–120 hours	Above 15 people	According to the curriculum	According to the curriculum	01/07/2016
Mandarin Certificate Class	Once each semester	Before exam (TOCFL)	18 hours	No limit	Free	Free	Before exam (TOCFL)
Chinese e-Learning Training	Once each semester	05/2016; 10/2016	6 hours	No limit	Free	Free	05/2016; 10/2016
Chinese Culture Activities	Chinese Festivals	Depends	Depends	No limit	Free	Free	Before each Chinese Festival



## Nan Jeon University of Science and Technology

Chinese Language Center | Tainan City

No. 178, Chaoqin Road, Yanshui District, Tainan City 73746, Taiwan (R.O.C.)

Tel: +886-6-6523111 ext.7524, 1901

Fax: +886-6-6520076

Email: njclc@mail.nju.edu.tw

Website: www.nju.edu.tw/njclc/language.aspx?language=2



## National Cheng Kung University

College of Liberal Arts, Chinese Language Center | Tainan City

No. 1 University Road, East District, Tainan City 70101, Taiwan (R.O.C.)

Tel: +886-6-2740715

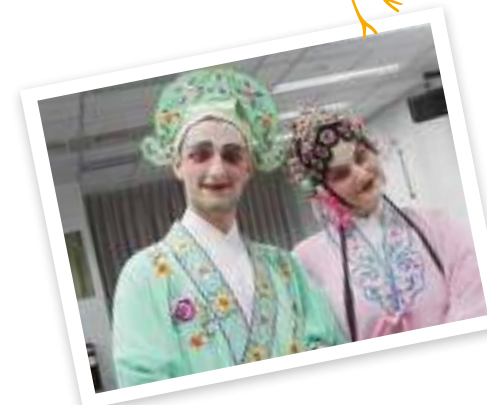
+886-6-2757575 ext.52040

Fax: +886-6-2742516

Email: em52040@email.ncku.edu.tw

shuling@mail.ncku.edu.tw

Website: kclc.ncku.edu.tw/apply



### Student Eligibility & Age

Applicants must be aged 18 or over and they must have completed at least high school education.

### Distinctive Features

As well as offering language acquisition courses, and courses about Taiwan's customs and culture, the Chinese Language Center can design specialized learning programs for individuals or organizations, using various teaching methods suitable for meeting their requirements.

### Application

Applications from abroad: Please mail or email all the required documents to us.

Applications submitted in Taiwan: All application materials should be submitted in person to the applications desk in our office. It is located at the address above.

### Scholarships

N/A

### Accommodation

1. 4 people share a room with ensuite (with AC)
2. NT \$9,000 per semester
3. The semester charge includes water rates, but electricity costs (including air conditioner) are charged separately.

### Location & Facilities

The Chinese language classroom can accommodate 15 students. It is fully equipped with teaching facilities, such as a digital multi-media lectern, interactive whiteboard, and LED projector.

The computer classroom can accommodate 16 students. It is equipped with a digital multi-media lectern, auto screen, and computers. Students can use these for independent study during and after classes.

Students can freely read here and they can assess their language acquisition progress using online tests.

### Student Eligibility & Age

Open to all applicants aged 18 or older. The Summer Intensive Program, and Study Tour Program are open to anyone aged 8 or older.

### Distinctive Features

1. Living in a historical capital
2. Student-centered education
3. Best facilitators for your Chinese learning
4. Customized Chinese study tour
5. Must-try festival activities and language contests

### Application

Online application at [kclc.ncku.edu.tw/apply](http://kclc.ncku.edu.tw/apply)

### Scholarships

There are five six-month General Scholarship quotas available.

The six-month periods are from January to June, and from July to December each year.

### Accommodation

**Accommodation options:**

On-campus or off-campus, and single or double room dormitories.

The rent varies from NT \$4,000 to NT \$6,500.

**On-campus dormitory:**

[http://dorm.osa.ncku.edu.tw/dorm\\_introduction/Ching\\_Yeh\\_3.html](http://dorm.osa.ncku.edu.tw/dorm_introduction/Ching_Yeh_3.html)

**Off-campus dormitories:**

1. Prince Hall: <http://nckudorm.prince.com.tw/>

2. Nando Studio 1: <http://www.nandu.com.tw/>

3. Nando Studio 2: <http://www.nckuresidence.com.tw/>

**For other housing agencies see:**

[http://www.6mama.com.tw/root/index\\_en.php](http://www.6mama.com.tw/root/index_en.php)

### Location & Facilities

The CLC is located in Tainan City and is fully equipped with audio-visual and computer facilities. There are additional facilities for students to engage in independent learning and practice: language laboratory, auditorium, mini-theatre, A/V classroom, and calligraphy classroom.

Course Type	Period of Study	Start Date	Total Hours	Class Size	Tuition & Registration Fee (NTD)	Tuition & Registration Fee (USD)	Application Deadline
Regular (Quarterly) Courses	03/2016–05/2016	03/2016	180 hours	10–15 people	NT \$26,000+ NT \$500	~US \$828	01/03/2016
	06/2016–08/2016	06/2016					01/06/2016
	09/2016–11/2016	09/2016					01/09/2016
	12/2016–02/2017	12/2016					01/12/2016

Course Type	Period of Study	Start Date	Total Hours	Class Size	Tuition & Registration Fee (NTD)	Tuition & Registration Fee (USD)	Application Deadline
General Course	21/03/2016–10/06/2016	21/03/2016	165 hours	6–12 people	NT \$31,100	~US \$972	30/01/2016
	27/06/2016–02/09/2016	27/06/2016	150 hours		NT \$28,300	~US \$884	15/05/2016
	19/09/2016–02/12/2016	19/09/2016	165 hours		NT \$31,100	~US \$972	30/07/2016
	19/12/2016–03/03/2017	19/12/2016	150 hours		NT \$28,300	~US \$884	15/11/2016
Summer Intensive Course	27/06/2016–22/07/2016	27/06/2016	80 hours	6–12 people	NT \$15,700	~US \$491	15/05/2016
	01/08/2016–26/08/2016	01/08/2016					
Customized Study Tour	1–8 weeks	The duration, tuition fee, and dates for study tours are determined in consultation with the client.					





## Southern Taiwan University of Science and Technology

Chinese Language Center | Tainan City

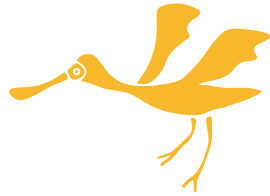
No. 1 Nan-Tai Street, Yung Kang District, Tainan City 71005, Taiwan (R.O.C.)

Tel: +886-6-2533131 ext.6010-6011

Fax: +886-6-3010040

Email: dept\_chilance@stust.edu.tw

Website: clc.stust.edu.tw/en



### Student Eligibility & Age

Aged at least 15

### Distinctive Features

1. Chinese Mandarin courses are offered on a regular basis and provide training and drills to improve listening, speaking, reading and writing skills. Other courses such as business Chinese and Chinese for tourism, allow students to study the Chinese language and also expand their worldview.
2. The center offers a variety of activities to help international students experience the different cultures in Taiwan and around the world, such as the International Art Festival, Lunar New Year events, and home-stays.

### Application

Prepare the required documents, scan them and e-mail the scans to dept\_chilance@stust.edu.tw

### Scholarships

A first-year student who completes registration (for a full 9-week term) can apply to receive a NT \$5,000 scholarship toward the tuition fee, if you have not received any other scholarship from the Taiwan government or from any other organization. Students who continue register for second session will have 10 % discount for tuition fee.

### Accommodation

Housing is available in the student dormitory. Two-person suites and four-person rooms are available for students. All dorm rooms are equipped with air conditioning, an internet connection, and a telephone. A cleaning deposit of NT \$1,000 is required.

### Location & Facilities

Southern Taiwan University of Technology is located in the north-eastern suburbs of Tainan City. The campus lies between Tainan City to the west and Yung Kang City to the east.

The university is very accessible: it is less than four kilometers from the Tainan Railroad Station and close to the intersection of the North-South Freeway and the Central Highway.

Course Type	Period of Study	Start Date	Total Hours	Class Size	Tuition & Registration Fee (NTD)	Tuition & Registration Fee (USD)	Application Deadline
Regular Class	9 weeks	14/09/2016	135 hours	5-15 people	NT \$18,625 (with scholarship) NT \$23,625 (no scholarship)	~US \$583 (with scholarship) ~US \$739 (no scholarship)	Two weeks before the starting date of each term
		16/11/2016					
	9 weeks	01/03/2016 25/04/2016	135 hours	5-15 people	NT \$21,263 (discount price)	~US \$665 (discount price)	
Summer Courses	8 Weeks	04/07/2016	120 hours	5-15 people	NT \$19,200	~US \$600	Two weeks before the starting date of each term



## Taiwan Shoufu University

Chinese Language Center | Tainan City

No. 168 Nanshi Li, Madou District, Tainan City 72153, Taiwan (R.O.C.)

Tel: +886-6-5718888 ext.115

Fax: +886-6-5717613

Email: chineselc@tsu.edu.tw

Website: www.tsu.edu.tw/a/webs/index.php?account=Clearn



### Student Eligibility & Age

Be at least 18 years old, and have graduated from high school.

### Distinctive Features

Taiwan Shoufu University actively works with top universities overseas to set up exchange programs, including universities in the United States, Japan, Australia and China. Our first-class Chinese Language Center is one of the official Chinese learning institutes in Taiwan approved by the Ministry of Education. The Chinese Language Center allows us to set up an entire curriculum, provide effective academic resources, and connect with foreign universities.

### Application

Please contact the center for more information.

### Scholarships

N/A

### Accommodation

Student dormitory accommodation includes furnished rooms, refrigerators, air conditioning, and a laundry.

### Location & Facilities

1. Taiwan Shoufu University is located in Tainan City's Madou District.
2. The campus facilities include a cafeteria, a convenience store, an indoor gymnasium, outdoor athletic facilities, an outdoor café, a library open at night, and a bookstore.

Course Type	Period of Study	Start Date	Total Hours	Class Size	Tuition & Registration Fee (NTD)	Tuition & Registration Fee (USD)	Application Deadline
Please contact the Chinese Language Center for course information.							



# I-Shou University

Language Center | Kaohsiung City

No. 1, Section 1 Syuecheng Road, Dashu District, Kaohsiung City 84001, Taiwan (R.O.C.)  
Tel: +886-7-6577711 ext.2604  
Fax: +886-7-6577056  
Email: [isuc@isu.edu.tw](mailto:isuc@isu.edu.tw)  
Website: [www.isu.edu.tw/interface/overview.php?dept\\_mno=335](http://www.isu.edu.tw/interface/overview.php?dept_mno=335)



# Kao Yuan University

Chinese Language Center | Kaohsiung City

No. 1821 Zhongshan Road, Luzhu District, Kaohsiung City 82151, Taiwan (R.O.C.)  
Tel: +886-7-6077916  
Fax: +886-7-6077717  
Email: [clc@cc.kyu.edu.tw](mailto:clc@cc.kyu.edu.tw)  
Website: [www.oia.kyu.edu.tw/clc/](http://www.oia.kyu.edu.tw/clc/)



## Student Eligibility & Age

Everyone is welcome!

### Distinctive Features

To meet the increasing demand for Chinese language learning, the Language Center at I-Shou University offers a wide range of courses to assist international students to improve their Chinese. There are many reasons to choose LC-ISU:

1. Quality programs taught by professionals
2. Small class sizes to encourage participation
3. Friendly and experienced staff to support your learning efforts
4. A good learning environment
5. Preparation for entering I-Shou University

### Application

Please send an email to [isuc@isu.edu.tw](mailto:isuc@isu.edu.tw) and we will provide the application information.

Course Type	Period of Study	Start Date	Total Hours	Class Size	Tuition & Registration Fee (NTD)	Tuition & Registration Fee (USD)	Application Deadline
Basic – Chinese Seasonal Course	03/2016–05/2016	03/2016	180 hours	6–10 people	NT \$23,000	~US \$800	One month before the starting date of each term.
Intermediate – Chinese Seasonal Course	03/2016–05/2016	03/2016	180 hours	6–10 people	NT \$23,000	~US \$800	One month before the starting date of each term.
Advanced – Chinese Seasonal Course	03/2016–05/2016	03/2016	180 hours	6–10 people	NT \$23,000	~US \$800	One month before the starting date of each term.

## Scholarships

N/A

### Accommodation

I-Shou University provides accommodation: four people share a room. If you have special accommodation requirements, such as a two-person room, an extra charge will apply.

### Location & Facilities

I-Shou University is located on Mt. Guanyin, Kaohsiung City. The campus has a wide range of facilities, including restaurants, convenience stores, libraries, bookshops, a post office, and a health clinic.

## Student Eligibility & Age

All international students aged at least 18 are welcome to join our program.

### Distinctive Features

Provide all international students with a Chinese language program and Chinese culture courses to improve their Chinese proficiency. Our faculty is excellent and professional. Offer a wide range of Chinese teaching and learning materials.

### Application

All international students who are 18 years old are welcome to join our program. Important information for students is contained in the Student Regulation Guide. Student Regulation Guide (download <http://www.oia.kyu.edu.tw/clc/word/KYU-student-regulation.pdf>)

## Scholarships

N/A

### Accommodation

There are three halls of residence within the campus.

### Location & Facilities

The KYU Chinese Language Center is located between Kangshan District and Lujhu District in Kaohsiung City. It has language-teaching classrooms, speaking training classrooms, and computer labs.

Course Type	Period of Study	Start Date	Total Hours	Class Size	Tuition & Registration Fee (NTD)	Tuition & Registration Fee (USD)	Application Deadline
1-on-1 Tutorial Program	Flexible	Flexible	30 hours	1 person	Registration: NT \$500 Tuition: NT \$24,000	Registration: ~US \$15 Tuition: ~US \$775	
Short-term Program	Flexible	Flexible	30 hours	2–5 people	Registration: NT \$500 Tuition: NT \$13,500	Registration: ~US \$15 Tuition: ~US \$435	
Quarter Program	3 months	03/2016	180 hours	6–12 people	Registration: NT \$500 Tuition: NT \$29,700	Registration: ~US \$15 Tuition: ~US \$960	15/01/2016
		06/2016					15/04/2016
		09/2016					15/07/2016
		12/2016					15/10/2016

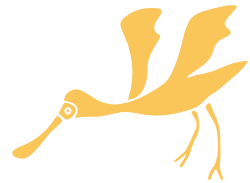




## National Kaohsiung Normal University

Center of Language and Culture Teaching | Kaohsiung City

No. 116 Heping First Road, Lingya District, Kaohsiung City 80201, Taiwan (R.O.C.)  
Tel: +886-7-7172930 ext.2603  
Fax: +886-7-7166903  
Email: clcts213@gmail.com  
Website: www.nknu.edu.tw/~clct/



### Student Eligibility & Age

12 years and older

### Distinctive Features

Our center is dedicated to the teaching of Chinese culture and Chinese as a second language. We offer a variety of Chinese courses that acquaint foreigners and overseas Chinese with the essence of the Chinese language and culture, and we aim to strengthen international friendship through the promotion of cultural exchange.

### Application

Please contact the center for more information.

### Scholarships

N/A

### Accommodation

The dormitory offers 2-person and 4-person shared rooms, some with a lounge room, and some with air-conditioning. Accommodation is an extra cost. It is not included in the tuition fees.

### Location & Facilities

**Location:** located in the downtown area of Kaohsiung

**Facilities:** Students can use the library at the university. The library offers supplementary learning materials and computers. A gym, swimming pool, and wifi are available.

Course Type	Period of Study	Start Date	Total Hours	Class Size	Tuition & Registration Fee (NTD)	Tuition & Registration Fee (USD)	Application Deadline
Spring	01/03/2016–20/05/2016	01/03/2016	171 hours	5–15 people	NT \$26,160		15/02/2016
Summer	20/05/2016–19/08/2016	20/05/2016	174 hours	5–15 people	NT \$26,660		15/05/2016
Fall	29/08/2016–18/11/2016	29/08/2016	171 hours	5–15 people	NT \$26,160		15/08/2016
Winter	Update in 09/2016	Update in 09/2016	Update in 09/2016	5–15 people	Update in 09/2016		Update in 09/2016



## National Sun Yat-sen University

Chinese Language Center | Kaohsiung City

No. 70 Lien-hai Road, Gushan District, Kaohsiung city 80424, Taiwan (R.O.C.)  
Tel: +886-7-5252000 ext.3030, 3031  
Fax: +886-7-5253039  
Email: alfc@mail.nsysu.edu.tw  
Website: clc.nsysu.edu.tw/



### Student Eligibility & Age

Any Taiwan citizen or foreigner with at least a high school diploma and a sincere interest in learning Mandarin is welcome to classes at the CLC.

### Distinctive Features

The Chinese Language Center at National Sun Yat-sen University in Kaohsiung city was founded in 1997. It is a government-approved center for teaching Chinese as a foreign language. The CLC aims to cultivate students' Chinese comprehension abilities, and their listening, speaking, reading, and writing skill proficiencies. All classes at the CLC are conducted in the target language.

### Application

Applicants need to send the application form and the other required documents to the Chinese Language Center by post or email.

\*An online application system will soon be available.

### Scholarships

**CLC Scholarship:**  
NT \$9,000 for 3 months

### Accommodation

**On-campus:**  
2-person room: About NT \$11,700 per session (3 months)  
4-person room: About NT \$5,800 per session (3 months)

### Location & Facilities

The CLC is located on the 4th floor of the International Research Building. It has modern, air-conditioned classrooms. The gymnasium, the Siziwan Beach Recreation Center, and a restaurant are all within short walking distance. The university provides a variety of athletic facilities.

Course Type	Period of Study	Start Date	Total Hours	Class Size	Tuition & Registration Fee (NTD)	Tuition & Registration Fee (USD)	Application Deadline
General Course	03/2016–05/2016	03/2016	165 hours	4–10 people	NT \$29,700	~US \$990	30/11/2015
	06/2016–08/2016	06/2016					29/02/2016
	09/2016–11/2016	09/2016					31/05/2016
	12/2016–02/2017	12/2016					31/08/2016
Intensive Summer Courses	6–8 weeks	07/2016	150 hours	4–10 people	NT \$27,000	~US \$900	31/03/2016



## National University of Kaohsiung

Language Center (The Division of Chinese Language) | Kaohsiung City

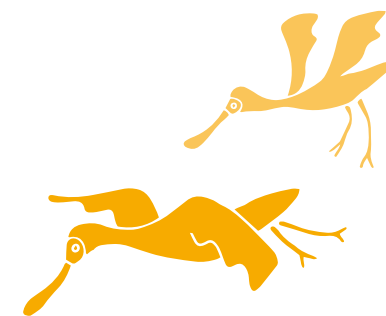
No. 700 Kaohsiung University Road, Nanzih District, Kaohsiung City 81148, Taiwan (R.O.C.)  
Tel: +886-7-5919257  
Fax: +886-7-5919258  
Email: clc@nuk.edu.tw  
Website: www2.nuk.edu.tw/clc/lc/



## Wenzao Ursuline University of Languages

Chinese Language Center | Kaohsiung City

No. 900 Minsu 1st Road, Kaohsiung City 80793, Taiwan (R.O.C.)  
Tel: +886-7-3426031 ext.3302, 3303, 3306  
Fax: +886-7-3464672  
Email: clc@mail.wzu.edu.tw  
Website: c040.wzu.edu.tw



### Student Eligibility & Age

No limit

### Distinctive Features

The Language Center offers two programs designed to meet the various language needs of individuals. As well as presenting foreign students with natural conversational language, and idiomatic expressions to develop their communicative skills, the Division of Chinese Language also aims to develop their understanding of the cultures and societies of Chinese-speaking countries, especially Taiwan.

1. Classes are small, and participants have an opportunity to interact with one another as they learn the language and the culture.
2. Field trips and social events are planned throughout the course to help students increase their cultural awareness.

### Application

Download an application form from this website: [http://www2.nuk.edu.tw/clc/application\\_form.html](http://www2.nuk.edu.tw/clc/application_form.html)  
All you have to do then is send us your application and a copy of your passport, and pay the tuition fee.

### Scholarships

N/A

### Accommodation

N/A

### Location & Facilities

700 Kaohsiung University Road, Nanzih District, Kaohsiung, 81148, Taiwan

**Teaching facilities:**

notebooks, projectors, speakers, and microphones.

### Student Eligibility & Age

1. Foreigners who are aged at least 18 and have completed senior high school or the equivalent.
2. Foreigners who are junior high school students can attend special courses offered during the summer and winter vacations.

### Distinctive Features

The Chinese Language Center was established in September 2002 to improve inter-cultural communication between Chinese and other cultures. We offer Chinese language courses at various levels, as well as elective culture courses, including calligraphy, and martial arts such as Taichi, and Kungfu. Short-term courses designed for junior high, senior high school, and college students, and special courses for particular groups of students are also available during the summer and winter vacations.

A distinctive feature of our Center is the free one-on-one tutoring class for all the registered foreign students.

### Application

Please contact the center for detailed information.

### Scholarships

(1) Excellence (2) Diligence

### Note:

With the exception of students who have received any scholarships from the ROC government or from another ROC organization, and students who are doing an exchange program at Wenzao, students who have registered and studied at the Chinese Language Center for one term and then continue to study at least 10 hours of class each week in the next term are eligible for these scholarships.

### Accommodation

Accommodation in the student dormitory is currently unavailable. We are happy to assist newly arrived students with their lodging arrangements if requested to.

### Location & Facilities

Wenzao is located in the beautiful harbor city of Kaohsiung, near the High-Speed Rail station Zuoying. The university has a library and an audio-visual center with multi-language collections available to all the students. The Chinese Languages Center has digitalized classrooms and a language lab with independent learning materials. Wifi is available on campus.

Course Type	Period of Study	Start Date	Total Hours	Class Size	Tuition & Registration Fee (NTD)	Tuition & Registration Fee (USD)	Application Deadline
Regular Class	11 weeks	14/03/2016	165 hours	5-10 people	NT \$27,825	~US \$928	16/02/2016
		13/06/2016					13/05/2016
		09/2016					One month before the starting date of each term
		12/2016					

Course Type	Period of Study	Start Date	Total Hours	Class Size	Tuition & Registration Fee (NTD)	Tuition & Registration Fee (USD)	Application Deadline
Spring Session	10 weeks	01/03/2016	150 hours	4-5 people	NT \$30,000	~US \$938	Three weeks before class starts.
Summer Session	10 weeks	01/06/2016	150 hours	4-5 people	NT \$30,000	~US \$938	Three weeks before class starts.
Autumn Session	10 weeks	01/09/2016	150 hours	4-5 people	NT \$30,000	~US \$938	Three weeks before class starts.
Winter Session	10 weeks	01/12/2016	150 hours	4-5 people	NT \$30,000	~US \$938	Three weeks before class starts.
Intensive Courses	2-3 months	every 2 months	75 hours	3-4 people	NT \$18,000	~US \$563	Three weeks before class starts.
Private Tutorials	Minimum 25 hours	At any time	Minimum 25 hours	1 person	NT \$15,000	~US \$469	Three weeks before class starts.





## National Pingtung University

Language Center, Chinese Language Division | Pingtung City

1 Lin-Sen Road, Pingtung City 90003, Taiwan (R.O.C.)

Tel: +886-8-7663800 ext.24001~24002

Fax: +886-8-7226409

Email: lcc@mail.nptu.edu.tw

Website: www.lcc.nptu.edu.tw/



## National Pingtung University of Science and Technology

Chinese Language Center | Pingtung County

No. 1, Shuefu Road, Neipu, Pingtung County 91201, Taiwan (R.O.C.)

Tel: +886-8-7703202 ext.7715

Fax: +886-8-7740274

Email: clc@mail.npust.edu.tw

Website: clc.npust.edu.tw/bin/home.php



### Student Eligibility & Age

All available

### Distinctive Features

1. Low cost of living: compared to major cities in Taiwan, such as Taipei, Kaohsiung, Hsinchu, Taichung, and Tainan.
2. Very reasonable tuition fees: compared to other Chinese learning programs island-wide.
3. On-campus integrated dormitories: local students and foreign students share a 3-bed or 4-bed room.
4. Culture-integrating Mandarin Chinese learning program: we offer opportunities for students to participate in social, cultural, and sporting activities.

### Application

Please visit the website:

<http://www.lcc.nptu.edu.tw/files/11-1111-3284.php?Lang=en>

Note:

Tuition Fees might be adjusted based on school or government policy.  
Please visit our website and check the latest information for applying our Chinese Class.

### Scholarships

N/A

### Accommodation

Student dormitories on the Ming-Shen campus and on the Lin-Sen campus include Telling Hall, Example Hall, and Creative Environment Hall, and there are three student dormitories on the Lin-Sheng campus. There are 753 rooms altogether. More than 200 of these rooms have air-conditioning, as well as internet connection.

### Location & Facilities

Our university is in Pingtung City, near the railway station. Transportation is very convenient. There is a regular and frequent bus service between the university and the bus station. Bikes are available around the three main campuses and in Pingtung City.

### Student Eligibility & Age

18 years and older

### Distinctive Features

1. The NPUST Chinese Language Center (CLC) provides general courses and short-term programs.
2. CLC also organizes out-door events and cultural tours for students to come into contact with different aspects of Chinese culture.
3. The teaching content of the course and the application of flexible teaching methods will develop students' basic Chinese language ability and knowledge of Chinese culture.

### Application

1. Download and complete the application form posted on the CLC website.
2. Send the application form together with the required documents listed on the website to the CLC by post to the address above, or e-mail: clc@mail.npust.edu.tw (English or Chinese versions are both accepted).

### Scholarships

N/A

### Accommodation

CLC general course students can be accommodated in the campus dormitories. Kitchens are available for students who prefer to prepare their own food, and prayer rooms are provided for followers of Islam.

### Location & Facilities

CLC is located in NPUST, which is situated on a hillside in northeastern Neipu Township in Pingtung. Students who are enrolled in the CLC general course may apply for a student ID card and use the university facilities.

Course Type	Period of Study	Start Date	Total Hours	Class Size	Tuition & Registration Fee (NTD)	Tuition & Registration Fee (USD)	Application Deadline
Special Arrangement (Full-time)	3 months	At any time	150 hours	1-4 people	NT \$30,000-\$45,000	~US \$1,000-\$1,500	At any time
Special Arrangement (Part-time)	Minimum 24 hours	At any time	Minimum 24 hours	1-4 people	NT \$200-\$300 per hour	~US \$7-\$10 per hour	At any time
Small Class (Part-time)	Minimum 24 hours	At any time	Minimum 24 hours	5-10 people	NT \$120 per hour	~US \$4 per hour	At any time

Course Type	Period of Study	Start Date	Total Hours	Class Size	Tuition & Registration Fee (NTD)	Tuition & Registration Fee (USD)	Application Deadline
General Course	4 months	22/02/2016	288 hours	10-15 people	NT \$32,400	~US \$1,013	One month before the starting date of each term
Short-term Program	2-3 months	03/2016	30 hours	10-20 people	NT \$1,000	~US \$31	One week before the starting date of each term



**Tzu Chi University**  
Center for Language Studies TCU | Hualien City

No. 67, Jieren Street, Hualien City 97074, Taiwan (R.O.C.)  
Tel: +886-3-8572677 ext.1681-1683  
Fax: +886-3-8466065  
Email: cltc@mail.tcu.edu.tw  
Website: www.language.tcu.edu.tw/



**Student Eligibility & Age**

15–65 years old  
(must be able to take care of their daily living needs)

**Distinctive Features**

The Center for Language Studies was founded based on the spirit of the university's founder, Master Cheng Yen, and her spirit of "Great Compassion to People and Great Mercy for All" guides the center. Our goals are:

- 1. To provide Mandarin courses for listening, speaking, reading, and writing (traditional Chinese characters) skills.
- 2. To enhance students' understanding of the Chinese culture.
- 3. To inspire students with the Tzu Chi spirit of great love, gratitude, respect for each other, and care for everyone.
- 4. To train Mandarin teachers with a Tzu Chi humanitarian spirit.

**Application**

The Center will accept online applications (application webpage can be found at: [http://www.language.tcu.edu.tw/?page\\_id=13](http://www.language.tcu.edu.tw/?page_id=13)).

For more details please visit our website:  
[http://www.language.tcu.edu.tw/?page\\_id=13](http://www.language.tcu.edu.tw/?page_id=13)  
or Facebook: <https://www.facebook.com/TzuChi.CLS>

**Scholarships**

N/A

**Accommodation**

University dormitory accommodation costs NT \$5,000 for a 2-month term, and NT \$7,000 for a 3-month term. 4 people share a room with one bathroom. Dormitories are equipped with coin-operated washing and drying machines, water dispensers, and refrigerators. You are personally responsible for providing and looking after your own personal-use items (such as: bedding, toilet paper, slippers, and medicine).

**Location & Facilities**

The Center for Language Studies at TCU is located in Hualien, which is the most beautiful county of Formosa Taiwan. Our campus is located about 15 minutes from the Hualien train station. We have a shuttle bus between the Center for Language Studies and the main campus.

The Center for Language Studies facilities include classrooms, out-door reading areas, a lounge, and even a sky garden. Students at the Center for Language Studies can also enjoy the facilities on the main campus.



**FICHET: Your all-inclusive source of information about studying in Taiwan**

FICHET - the Foundation for International Cooperation in Higher Education of Taiwan - is a non-profit organization of universities, founded in 2005. It currently has 116 member universities.

Tel: +886-2-23222280  
Fax: +886-2-23222528  
E-mail: [fichet@fichet.org.tw](mailto:fichet@fichet.org.tw)  
Website: [www.fichet.org.tw](http://www.fichet.org.tw)

Course Type	Period of Study	Start Date	Total Hours	Class Size	Tuition & Registration Fee (NTD)	Tuition & Registration Fee (USD)	Application Deadline
Spring Term	22/02/2016–13/05/2016	22/02/2016	180 hours	Less than 10 people	Registration NT \$500 + Tuition NT \$36,000	~US \$1,141	31/01/2016
Summer Term	30/05/2016–19/08/2016	30/05/2016	180 hours	Less than 10 people	Registration NT \$500 + Tuition NT \$36,000	~US \$1,141	30/04/2016
Fall Term	05/09/2016–18/11/2016	05/09/2016	165 hours	Less than 10 people	Registration NT \$500 + Tuition NT \$33,000	~US\$1,047	31/07/2016
Winter Term	05/12/2016–17/02/2017	05/12/2016	165 hours	Less than 10 people	Registration NT \$500 + Tuition NT \$33,000	~US\$1,047	30/11/2016

\* We also provide short-term (2 months) and private class, please feel free to contact us and get more details.